

October 2023

Sylvan Lake Shoreline

CARDBOARD REGATTA



Inside

[Parks & Easements](#)

[Eco-Corner](#)

[Octoberfest](#)

[Art Exhibition](#)

[Making Scarecrows](#)



Parks & Easements

Playgrounds, Parks, Easements and Eco-Lakers Updates

Fall and all its beauty has started. Soon the colors will change and our natural areas will look glorious. For our neighborhood volunteers, it also means we are back in our easements, working hard to improve them. But before we talk about what's to come this fall, here is a recap of what we've done over the past summer.

Summer is usually a slow time for improving our parks and easements. With the heat of summer, it is frequently too hot to work and too dry to plant. However, it is a great time to spend days at the beach with our families or play at our playgrounds, parks and in our natural areas. With all the recent additions, our playgrounds are becoming more engaging for our kids and our natural areas give our kids unique play opportunities that most other neighborhoods can not offer.



restored and painted. They should look brand new by the time we are done! Putting up these slides takes a lot of time, muscle and effort to move and install! Thank you to everyone who has been called over to help at the last minute! It truly takes a village. Special shout out to Scott Hanson for all the planning and manual labor he has put into this park so far!!!

Despite the heat, our Eco-Lakers and other neighbors still worked hard this past summer. We were lucky to get a beautiful 70 degree August day to work along W Sylvan Drive with the township, removing regrowth of invasive species to prepare for fall plantings. And earlier in the summer, we prepped for a future bird sanctuary in birdhouse square, in memory of our longtime neighbor, friend and birder, Kathy Trahan. Thank you to Al Grandt for installing the new bird house made by our birdhouse master Dick Zaleski. We also joined our neighbors along the Ravinia shoreline to add some much needed flowers. And we can't forget the beach benches that were repaired by Jeff Brashear and the beach shed door that was painted by the Seidners.



Schwerman park's renovations are continuing and its newest addition is the open turbo slide. This slide might look a bit rough currently but don't worry. Both metal slides, duck and car will be taken down,

continued on next page

Parks & Easements continued

Market stands were another big hit this summer. We were able to raise several hundred dollars by selling home grown organic produce, while our little entrepreneurs sold lemonade along with handmade jewelry and slime. This money will go towards buying new native plants for the easements.



July 29 Garden Walk

As part of the Sylvan Lake 100th Birthday celebration, nine beautiful gardens were opened to the Sylvan Lake community for viewing. They included amazing vegetable gardens, native gardens, and creative spaces of all kinds. Thanks so much to the neighbors who opened their gardens and to the neighbors who came out to enjoy them. Unfortunately, guided easement walks had to be canceled due to muddy conditions.

Participants enjoyed the walk so much that there are hopes to have another garden walk next summer. Four or five gardens relatively close to one another would work well. If you are interested in being a part of a summer, 2024 garden walk, contact the garden club board or an Eco-laker (sandrawashburn@comcast.net)

Upcoming work this fall led by our eco-focused neighborhood volunteers

Eco-Lakers are excited to start doing weekly work days this fall, weather permitting, along with several weekend workdays. Email sarahstoeckel@gmail.com if interested in joining us. We will be continuing our work in our easements, removing excessive or invasive brush and trees and replacing them with native plants and also planting native plants along the easement shorelines to promote erosion control and good water

quality. While we plan to work in all areas, we do have a couple larger projects to focus on. We are most excited to improve the long stretch along W Sylvan Drive. It is an area that most of us walk or drive past daily, so we have been working hard on it for years. Since this property is mostly on the township road right-of-way, Eco-Lakers and Fremont Township have joined together to work on it. A good portion of this area was overrun with weeds and invasive bushes and with all the buckthorn hanging over the countryside fence, it also becomes very difficult to maintain. After years of trying to control the buckthorn and honeysuckle ourselves and with the township, we enlisted help from our natural areas stewardship vendor, Tall Grass Restorations. They will be a huge help in controlling these invasives and will allow us to focus on seeding and planting native bushes. Fremont Township has already purchased several bushes for this area and with the money raised this summer, Eco-Lakers has purchased several more. We hope we can make this area more beautiful, while also providing food and habitat for all the creatures we share our neighborhood with.



Along W Sylvan Drive is also the home of bird house square and the future home of our bird sanctuary, in memory of Kathy Trahan. Many neighbors have donated to this cause and we are very excited to start planting over there. If anyone still wants to donate towards it, please contact Sarahstoeckel@gmail.com.

continued on next page

Parks & Easements continued

W Sylvan is not the only major project we are focused on this fall. Blue Heron Point, off of W Sylvan South, is also in major need of an invasive brush clearing. It will be a difficult task due to steep hills and many very thorny Black Locust trees. This fall our goal is to provide access to the lake, for neighbors without lakefront properties, and will continue to improve this easement over the next couple years.

The Sylvan Lake Improvement Association is also looking for volunteers to help build bridges, piers and kayak racks for our easements. We also are looking for volunteers who are familiar and able to plant several trees in our parks. Please contact Sarahstoeckel@gmail.com, if you are interested in helping with any of these projects.



As always, this fall, remember to leave the leaves.

Our yards and gardens provide an essential overwintering habitat and food for many invertebrates, frogs, toads, turtles, songbirds and mammals. Frogs, toads and turtles need leaves for shelter and food. Many species of moth and butterfly caterpillars overwinter in leaves and then emerge the next spring. Mammals rely on leaves and yard waste for nesting materials. And songbirds rely on fallen leaves to provide food for their young come spring. Instead of burning or raking your leaves consider leaving them to break down naturally to improve the soil while also adding food, shelter and nesting material for wildlife. If you must remove leaves from your lawn, consider mowing over to mulch them which adds an organic layer and improves the health of your grass. Or mulch them and add them to your garden beds or compost bin, they are an invaluable resource for any garden.



In addition to leaving your leaves, wait until spring to cut back your perennials and bushes. Besides adding winter interest, dried seed heads and berries are an important food source for many song birds. Leaving them also provides an extra layer of insulation and can help protect your plants from winter injury. Remove diseased foliage and stems, but leave the rest!



Please remember to never dispose of your leaves or yard waste in our parks, easements and along W Sylvan. This includes leaf blowing.

Burning in easements is prohibited unless with prior permission and for easement cleanup only, not property yard waste.

Parks and Easements
Sarah Owen
Kimberly Del Bene

SYLVAN LAKE'S 2023

OKTOBERFEST



SCHEDULE OF ACTIVITIES

KID & PET COSTUME PARADE	2:15
TRACTOR RIDES	2:30
FACE PAINTING & KID CRAFTS	2:30-4:00
KIDS GAMES	2:30-3:30
BAGS TOURNAMENT	3:00
BAKE + CRAFT SALE	3:00
MAUI BUBBLES (BUBBLE SHOW)	4:00 AND 7:00
FOOD SERVICE	4:00-8:00
BAR SERVICE	4:00-10:30
DJ	6:30
BONFIRE	DUSK

Saturday, October 7th
Schwerman Park



VOLUNTEERS STILL NEEDED TO MAKE THIS EVENT POSSIBLE!
IF YOU ARE WILLING TO HELP PLEASE EMAIL:
KIMBERLY.DELBENE@MY.RFUMS.ORG
OR TEXT: 847-668-4689

ECO-CORNER #28

by Jenn Cameron

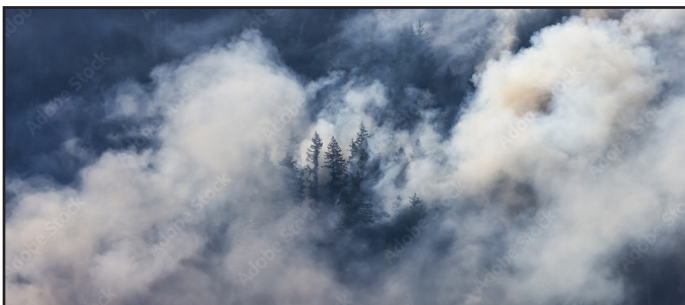
AQI in 2023 and Beyond

The incredible amount of smoke generated from the 2023 Canadian wildfires continues to drift around the globe, and this particular type of air pollution originating hundreds if not thousands of miles away was also noticed at Sylvan Lake this summer. Several of our days around the lake began with hazy morning skies followed by a smell of smoke



noticeable in the afternoon air. Checking the AQI (Air Quality Index) became a daily concern for many people planning outdoor fun activities and even errands around town.

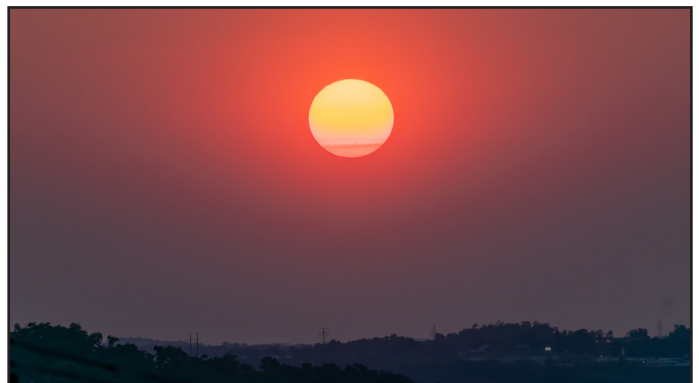
Wildfires burning anywhere in the world are just one factor among many that can negatively affect air quality. Factories, transportation exhaust, pollen, volcanoes, and even war can contaminate and degrade the air we breathe. Poor air quality not only negatively affects the respiration of humans and animals but also interferes with the process



of photosynthesis for trees and plants > including those grown for our food supply! In addition, fine particulates and chemicals wafting around in the atmosphere (even if unseen) eventually settle on land and in water.



FYI, the International Day of Clean Air for blue skies was on September 7, 2023. The United Nations adopted this resolution in 2019 in response to the growing problem of air pollution from all sources and the necessity of the world community to work together to find solutions to improve and protect air quality. Unclean air negatively impacts human health and the health of plants, animals, and ecosystems globally, and it was very noticeable around Sylvan Lake this past summer. Let's all look ahead toward bluer skies and doing what we can for cleaner air in our future!



Check out these links. They are full of useful information!

<https://firesmoke.ca/forecasts/current/>

<https://earthobservatory.nasa.gov/images/151696/relentless-wildfires-in-canada>

<https://www.un.org/en/observances/clean-air-day>

<https://www.airnow.gov/education/what-you-can-do/>

Tammie Trahan, Alyssa and Sam Kendall, and Jordan and Melissa Polonsky from Sylvan Lake will have art in the Mundelein Community Art Gallery.

SAVE THE DATE!

2ND ANNUAL ART EXHIBITION

LURE OF THE LOCAL DRAWING YOU IN

PRESENTED BY THE MUNDELEIN
ARTS COMMISSION

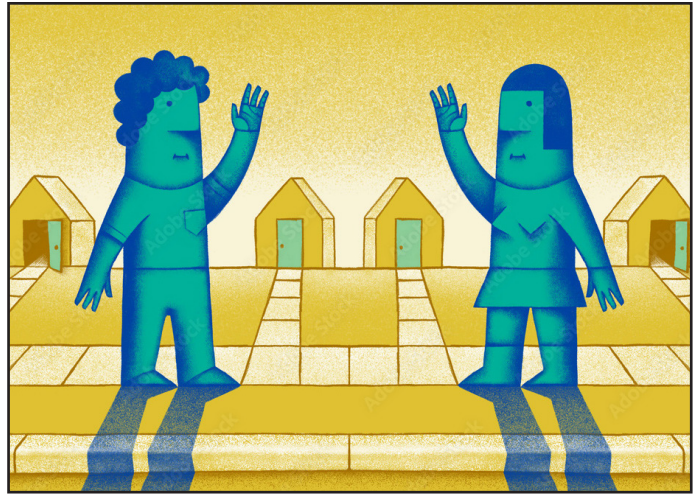
420 N. LAKE STREET

OPENING RECEPTION - SAT, OCT. 14 (6-9PM)

OPEN SATURDAYS AND SUNDAYS
THROUGH NOV. 11 (11 AM - 5 PM)



Making Scarecrows



Sylvan Lake has maintained a 100-year tradition of waving to neighbors as we pass each other within the community. Many folks express surprise during their first few months in the community, but then find it an enjoyable custom. Perhaps consider this if you are not already part of the “Sylvan Lake-wave-to-your-neighbor-club.”

SLIA Board

President.....	Dan Trahan
Vice President.....	Cliff Gartner
Treasurer.....	Ed Meltzer
Secretary.....	Jeremy Vale
Parks & Easements ...	Sarah Owen, Kimberly Del Bene
Lake	Tom Truffer
Beach	Peter Lind
Recreation	Laurie MacKay

Garden Club

President.....	Tammie Trahan
Vice President.....	Kathy Ford
Treasurer.....	Kelly Dickenson
Secretary.....	Irene Flora

Board Members

Jen Crow	Nancy Hanson
Lauren Rollinger	Jen Scharff
Olga Zavialov	Karen Finerty
Debbie Pomazal	Nancy Brashear
Mariann Mortensen	Wendy Kjeldbjerg

Newsletter Designed and Edited by

Jeanne Peterson	Dan Trahan
Melissa Kitzmiller	Andrew Kitzmiller

