

August 2022

Sylvan Lake Shoreline

FOURTH OF JULY CELEBRATION



Inside
Volleyball
Eco-Corner
Venetian Night
Parks & Easements
Launching Kayaks





Thanks to Scott Hanson, Sam Ford, Anibal Delacruz, Patty and Derek Hampson for upgrading the basketball court light at Bjorklund Park.



The Sylvan Lake Summer Volleyball season came to a close on Saturday, August 6th with the annual tournament. There were nine teams that played over the summer on every Tuesday night and then competed in the end of season Tournament. Many games were played during this hot, humid tournament day. Congratulations to Ben Ford's team for winning the Tournament! Thanks to Peggy Delacruz and the Garden Club for sponsoring the Hot Dog Social during the tournament!

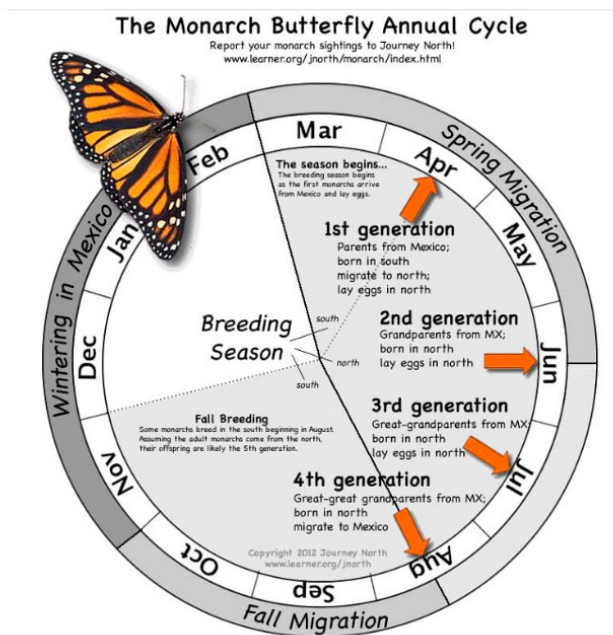
**FALL GARDEN CLUB
PARTY/MEETING**
PLACE: Beach
SEPT.16TH AT 6:30

DRINKS WILL BE PROVIDED
PLEASE BRING AN
APPETIZER OR DESSERT TO SHARE

ECO-CORNER #Uh-Oh

Our migratory monarch butterfly has been listed as Endangered by the International Union for Conservation of Nature (IUCN)

Be on the look out for these unique pollinators as they flutter around our Sylvan Lake neighborhood, parks, and yards.



There are several things we can do to help stabilize this fragile butterfly population as these beneficial insects gradually make their way to our Midwest area. Individual efforts count!



1. Consider planting milkweed in your garden!
2. Reduce or perhaps stop using pesticides around your yard!

Also, review the linked information sites below for guidance and ideas on additional ways you can

support and protect our iconic monarch butterflies.

<https://www.iucn.org/press-release/202207/migratory-monarch-butterfly-now-endangered-iucn-red-list>

<https://www2.illinois.gov/dnr/education/Pages/monarchgen.aspx#Mon6>

<https://www.npr.org/2022/07/21/1112688105/beloved-monarch-butterflies-are-now-listed-as-endangered>

<https://apnews.com/article/science-north-america-insects-butterflies-climate-and-environment-c5e406e2f01c731167393296c19c302b>



Sylvan Lake Website

www.slia.net

The Sylvan Lake website provides up-to-date information on events and activity around the lake. You can also download the latest Shoreline, participate on a message board, and learn about the history of Sylvan Lake.

The updated website is ready for your use. The only place that requires a password is for the Sylvan Lake Phone Directory under the **Association, Contacts** tab.

If you don't have the password, send an email message to Sylvanlakers@gmail.com and request it.

VENETIAN NIGHT

Sunday , Sept. 4th
starts at 7pm.
rain date , Sept. 5th
**Meet at the beach
to start the train!**

Sylvan Lake

2022

Garden Club Sponsored

Parks & Easements

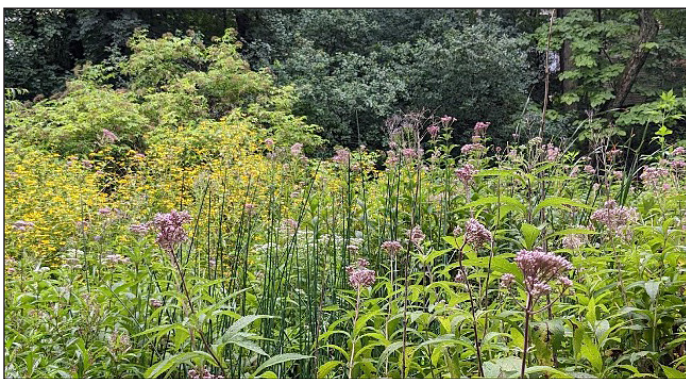
Ash trees

Illinois has lost so many ash trees due to emerald ash borers over the years and our neighborhood is no exception. We removed one last fall in Schwerman Park and one this year in Point Comfort Park. We still have three more in our parks and one at the beach that we are hoping to save. Last month, Pouls treated those remaining trees and we will continue to treat them every 2 years until emerald ash borers no longer pose a threat. It is always hard to decide when it is appropriate to use insecticides, but we decided the benefit of saving these trees outweighed the risks.

Ravinia in full bloom

We are nearing the end of summer, but the wetlands of ravinia are still overflowing with flowers and pollinators. Joe Pye weed, boneset, blue vervain and black eyed susans tower over the creek and overflow areas. Soon to follow will be an endless sea of goldenrod. It is a stunning display of native flowers that are not only beautiful but ecologically beneficial.

Newly cleared areas are experiencing excessive weeds, but with time those weeds will be treated and replaced with native flora.



Next year, with the help of some neighborhood children, we hope to add a boardwalk in one of the swampier areas. This will make it more accessible to reach the lake or Oak Terrace from Hiawatha Terrace. They have been raising money through produce and lemonade stands to help with the cost.



Thank you Al Grandt, the Shoo family and Dick Zaleski for the new bird houses in Ravinia. They removed the old deteriorating ones and replaced them with two new ones that were hand built and donated by Dick Zaleski.



Restoring our very weedy Maple Park shoreline

We are still struggling with controlling the weeds along Maple Park Shoreline. Please be patient, it will take some time. The area the eco chicks seeded is filling in beautifully, but controlling the thistle can be difficult. Restoring the remaining degraded shoreline will consist of applying herbicides and seeding, but it will still take a couple years before it is fully grown in. Once it does, it will be gorgeous. We will also be adding more areas for boating and fishing access.

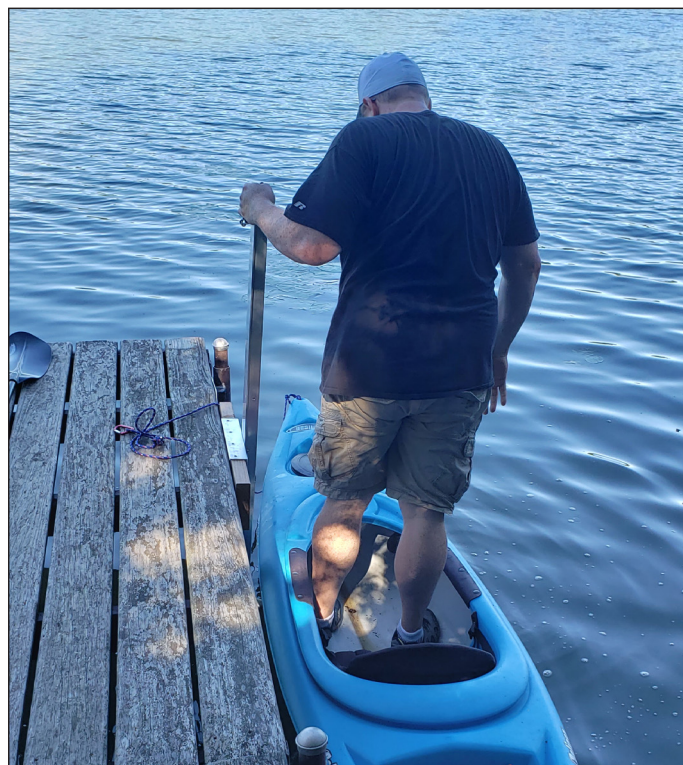
Playground updates

We will be making some improvements to the playground in Schwerman Park next year. Due to the rising costs of lumber we are looking to replace deteriorating parts and make improvements instead of rebuilding the entire structures. If you have any ideas or suggestions please contact Kimberly Del Bene at kimberly.delbene@my.rfums.org

Sarah Owen

Launching Kayaks

Kathy Ford identified a problem with launching kayaks from our easement docks at Juneau Terrace and Ravinia Park. The rocky surface makes it difficult for a beach launch and the pier heights make it difficult to climb in and out safely. So she researched tools to assist in launching kayaks and with board approved funds, she and Sam Ford installed them at Juneau Terrace and Ravinia Park! A huge thanks to the Fords for taking on this initiative and installing them. She's also going to hang laminated signs on their use on the docks.



How To Use the Kayaarm



Step 1:
Float kayak bow over
KayaArm and "step in"



Step 2:
Now that the kayak is stabilized
on arm,
sit down with ease



Step 3:
Push off and enjoy the ride!



Use this QR Code to see a video demonstration.

SLIA Board

President	Dan Trahan
Vice President	Cliff Gartner
Treasurer	Ed Meltzer
Secretary	Jeremy Vale
Parks & Easements ...	Sarah Owen, Kimberly Del Bene
Lake	Tom Truffer
Beach	Peter Lind
Recreation	Laurie MacKay

Garden Club

President	Tammie Trahan
Vice President	Kathy Ford
Treasurer	Kelly Dickenson
Secretary	Peggy De La Cruz

Board Members

Jen Crow	Nancy Hanson
Lauren Rollinger	Jen Scharff
Olga Zavialov	Karen Finerty
Debbie Pomazal	Nancy Brashear
Mariann Mortensen	

Newsletter Designed and Edited by

Jeanne Peterson	Dan Trahan
Melissa Kitzmiller	Andrew Kitzmiller

