



# Sylvan Lake Shoreline

Get the news you need at: [www.slja.net](http://www.slja.net)

Publishing Dates: April • June • August • October • December

## Oktoberfest (October 9th)

We will have live music, world famous Sylvan Lake beer brats (patent pending), a variety of alcoholic and non-alcoholic beverages, kid's games, adult games, hayrides, bonfire, and the infamous Garden Club bake sale.

First and foremost, volunteers are needed. Contact Ryan Haukedahl, Kimberly Del Bene or Debbie Pomazal to volunteer. They are all in the SL Phone Directory.

### Schedule of events:

2:00	Kid/Pet Costume Parade
2:30	Corn Golf/Bags
2:30 – 4:00	Kids' Games, Crafts and Hand Painting
3:00	Bake Sale
3:00	Craft Show
All Day	Portable Restroom on site
4:00	Acoustic Guitar
4:00 - 8:00	Food Sales
4:00 -- 11:00	Bar is Open. Everyone will be carded
6:00 -- 10:00	Live band – “Crossroads”
Dusk	Bonfire
11:00	End of Oktoberfest – All activities will end for the evening.

*It is important that everyone follow CDC Guidelines.*

**In preparation for Oktoberfest on Oct 9th, we need volunteers to bring logs to a staging pile in Schwerman Park for the bonfire.**

Note: Please only bring logs for burning. No branches, leaves, or other material can be burned.

There are logs from some downed trees in Ravinia Park that can be brought to Schwerman Park. If you enter through Oak Terrace and go past the docks, there's a log pile marked. **See map on page 2**



## See inside for details:

Fall Cleanup Day .....	2
Logs for bonfire .....	2
Sylvan Lake Website .....	2
Beach Success .....	3
Editor Needed Soon .....	3
Parks & Easements .....	4
Putting down roots .....	5
Venetian Night .....	6
Cardboard Regatta .....	7
Kids' Olympics .....	8
Leaf Burning .....	9
Dog Waste .....	9

### SAVE the DATE

**Fall Clean up - October 16th,  
Rain date of Sat., Oct. 23rd.**

## A Great Park Improvement

*Drainage tile improvement is complete!*

Many will remember how very wet and soggy Schwerman Park can be when it rains. This years improvement of newly installed drainage tile should make for drier feet at all our future community events!

# Fall Cleanup Day Saturday, Oct 16 @ 9am!

- Rain Date is Oct 23

*(Many Hands Make Light work!)*

Please volunteer to Captain, or work at one of the listed areas. This is a chance to see neighbors, lighten the workload, and save money for our neighborhood!



Any interested parties looking to Captain please call or email Sarah

[sarahstoeckel@gmail.com](mailto:sarahstoeckel@gmail.com)

- |   |                                   |
|---|-----------------------------------|
| • Beverage Distribution                     | • Maple Park                      |
| • Ravinia Park                              | • Schwerman Park                  |
| • Beach                                     | • Briar Terrace                   |
| • Oak Terrace                               | • Buena Terrace                   |
| • Pump house at Water Triangle on Crescent  | • Entrance on Crescent off Gilmer |
| • South Sylvan entrance off Gilmer and thru | • Point Comfort Park              |
| • Bjorklund Park                            | • Bjorklund Park                  |
|   | • Wildflower Terrace              |

Thank you for volunteering neighbors!

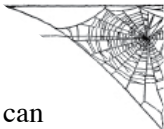
## CLEAN UP DAY

## Sylvan Lake Website

[www.slia.net](http://www.slia.net)

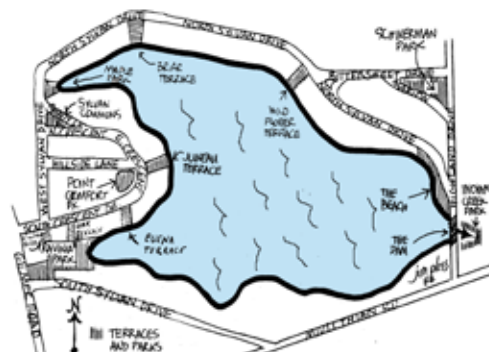
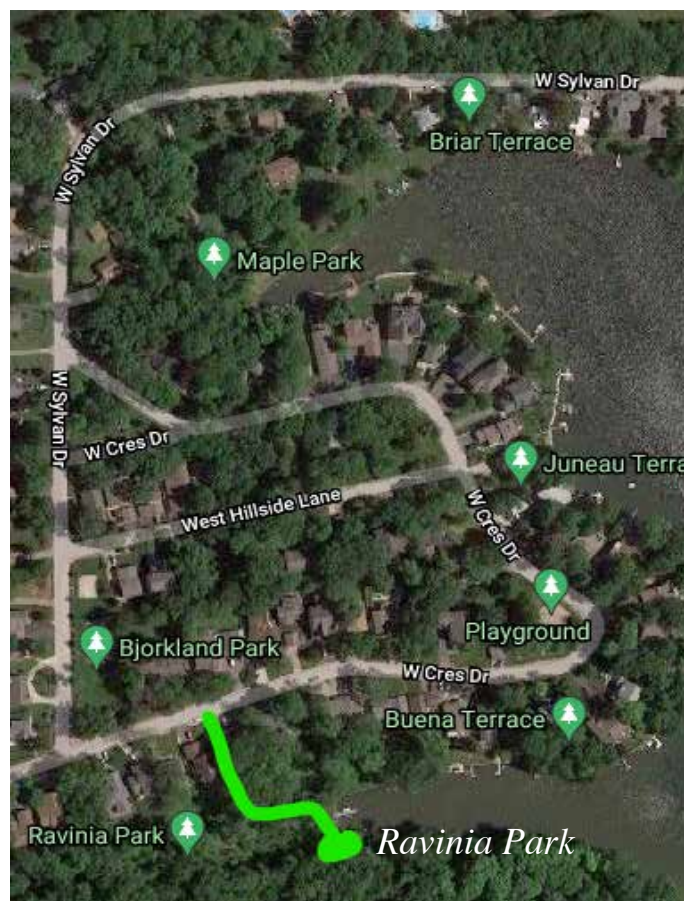
The Sylvan Lake website provides up-to-date information on events and activity around the lake. You can also download the latest Shoreline, participate on a message board, and learn about its history.

The updated website is ready for your use. The only place that requires a password is for the Sylvan Lake Phone Directory under the **Association, Contacts** tab. If you don't have the password, send an email message to [Sylvanlakers@gmail.com](mailto:Sylvanlakers@gmail.com) and request it.



## Logs Available in Ravinia Park for Staging the Bonfire Pile in Schwerman Park

There are logs from some downed trees in Ravinia Park that can be brought to Schwerman Park. If you enter through Oak Terrace and go past the docks, there is a log pile. It is marked on this map with the bright green line.





# Beach Success

Saturday, Oct 2, a few volunteers helped bring in all the beach docks, rafts, and ropes. For all those that keep their boats at the beach or sailboat docks, some of your water craft had to be parked on the beach.

**Note:** All watercraft at the beach, except those stored on the boat rack or behind the shed, must be removed either to your home or your nearby easement by November 15. They must remain off the beach property from Nov 15 – Mar 15 of next year.

A Big Thanks to Peter Lind, Beach Director, for organizing the dock removal and beach clean-up.



## Sylvan Lake Newsletter Editor Needed Soon

Donn Hamm has been the Shoreline newsletter editor since 2008 when he took over the job from Gen Connor. Gen had been the editor for many years when Donn took over this assignment. Now after 13 years and 65 issues Donn is going to retire as editor after the December 1st, 2021 Shoreline issue.

We are now asking for a volunteer to become the next editor of the newsletters {published 5 times a year on the first of April, June, August, October and December.}

Affordable, professional, desk-top-publishing software (Affinity Publishing) is now available and can be purchased for the next editor. Donn will also be available to share any information about past newsletter issues, articles, pictures and graphics that have been used in the past 13 years

Please contact SLIA President Dan Trahan, or Donn Hamm (dehamm@comcast.net) for more information.

Donn



# Parks & Easements

by Jeri Swanson

Thanks to all the enthusiastic neighbors over the years that made so many projects in our woodlands possible. Without the volunteer base we had, none of the grants we received would have been possible. Because the first, in Ravinia, turned out so well, we had that example of commitment to present for future grant applications. Someday I'll dig through all the paper work to tally up all the grants we were awarded. But in the meantime, pat yourselves on the back because we could not have qualified without the history of volunteerism.

I "think" I joined the board in 1991 and was assigned secretary. I took over Parks/Easements at some point.

Now we have someone new: Sarah Owen. She grew up here and is very knowledgeable about plants. I am thrilled to have the opportunity to work with her in transition.

You may still call me with questions as I will continue to help Sarah as long as she wants me to. We have already visited a few areas to help her become familiar with each and their different needs.

Please continue to volunteer not only on clean up days, but if you see garlic mustard invading an area or purple loosestrife, ragweed or buckthorn please

consider removing it. Or, call Sarah or myself to ID it if you're not sure. Al & Patti Burmeister did that just the other day and we were happy to assist.

It's been a pleasure to meet so many over the years that share environmental issues and want to help. Like I said at the annual meeting, the Eco-Chics are a wonderful group of women dedicated to remove invasive species and cultivating natives that are suitable for our heavily wooded neighborhood.

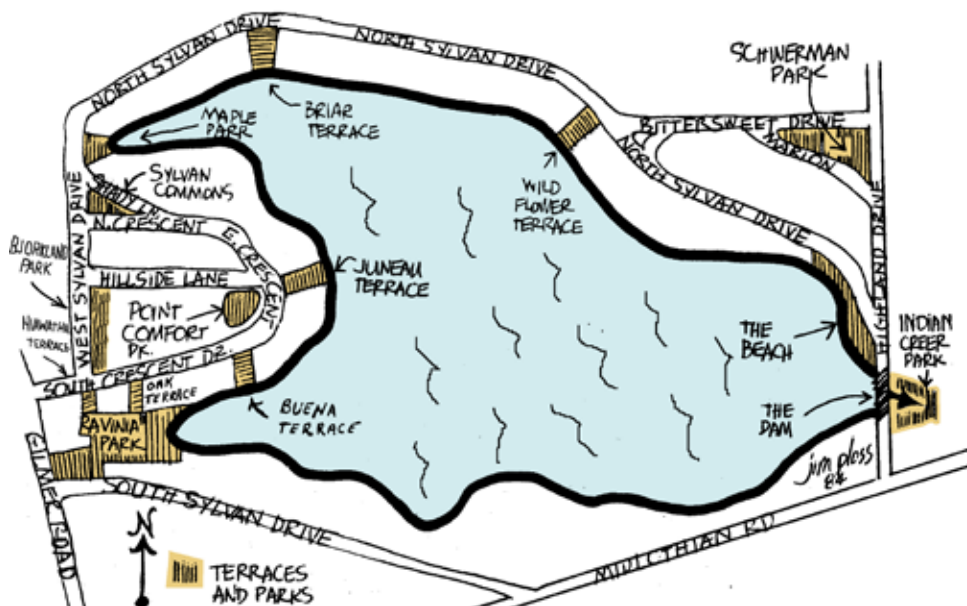
## On a sad note:

Please watch your oaks, if they start losing leaves early in the year, like summer or leaves dry up, it could be "oak wilt", a virus that travels by root. No cure yet, only certain death. Several have been removed this year on private and public areas.

Clean up Day is Sat. Oct 16th, please come out for a few hours to pick up fallen branches or work on a other projects to be announced in an blast prior.

Usually all you need to bring are pruners, work gloves, maybe a rake or shovel. If a a certain project calls for different tools, it will communicated.

Jeri Swanson: 847-507-2760





# ECO-CORNER #20

by Jenn Cameron

## Putting down roots

Sometimes a picture is worth, you know ...

This diagram is from the USDA Natural Resources Conservation Service/Illinois and illustrates just how deep the root systems of native plants are compared to Kentucky Blue Grass (shown on the far left of the diagram). Many homeowner yard spaces and land around businesses and schools have extensive areas of lawn. *So. Much. Grass.* I have grass, you have grass, and neighborhood parks have grass ... *totally get it.* Grassy areas are functional, but native plants are also worth learning about and installing! Natives can withstand periods of little to no rainfall above ground while at the same time pushing their network of roots deep which holds deep ground together ~ and pollinators LOVE native plants too! :-)

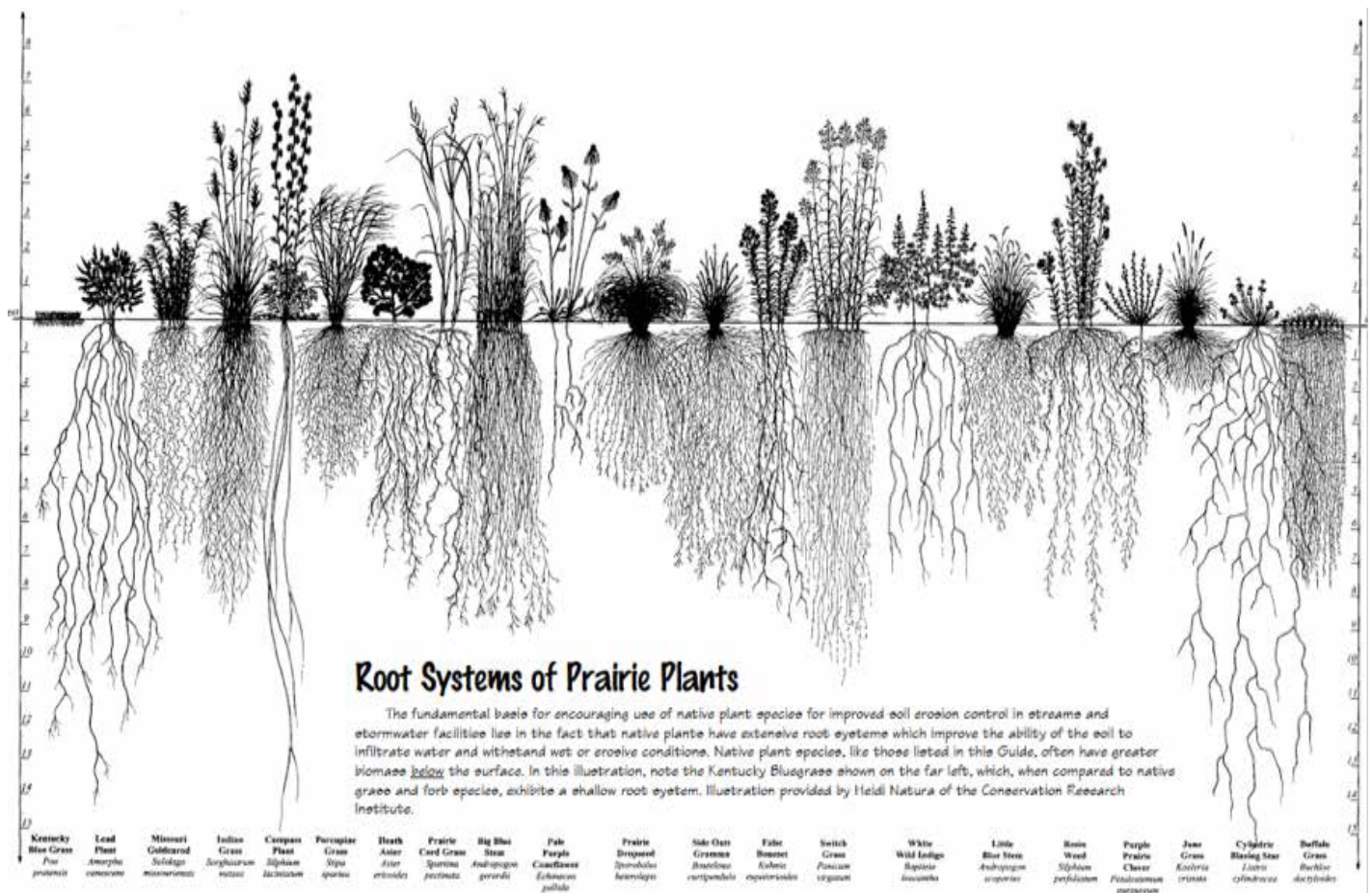
When Mother Nature douses areas with significant rainfall, causes a too-quick snow melt, or even settles a drought upon us, lawn grass just doesn't hold ground, *per*

*se*, compared to an area planted with natives. In addition to having very shallow roots that are always thirsty and unable to prevent erosion, lawn areas are quick to run off surface water and fast to crisp up in the heat. From this graphic it is easy to see the below ground benefits of installing native plants for erosion control on both flat and sloped areas, not to mention native plants being less of a draw on water resources. It also shows why native plantings are being considered for some areas of the Maple Park project that is in the early planning stage here at Sylvan Lake.

[https://www.blogs.nrcs.usda.gov/wps/portal/nrcs/detailfull/il/plantsanimals/?cid=NRCS141P2\\_030726](https://www.blogs.nrcs.usda.gov/wps/portal/nrcs/detailfull/il/plantsanimals/?cid=NRCS141P2_030726)

<https://news.wttw.com/2020/05/20/convert-your-lawn-to-prairie-webinar-sarah-michehl>

[https://www.fs.fed.us/wildflowers/Native\\_Plant\\_Materials/Native\\_Gardening/index.shtml](https://www.fs.fed.us/wildflowers/Native_Plant_Materials/Native_Gardening/index.shtml)





# Sylvan Lake Venetian Night 2021



Thank you to  
Steve Mongelluzzo  
for the great pictures





# *Sylvan Lake Cardboard Regatta*

*Excitement and fun for everyone!*



*Thank you to  
Tammie Trahan  
for the great pictures*





# Kids' Olympics 2021

Sylvan Lake today... Nationals Tomorrow!

*A big thank you to the organizers and many volunteers who provided our Sylvan Lake kids with a wonderful, challenging and fun-filled day."*





# No Leaf Burning On the Street

## Lake County Regulations

**Absolutely no burning on roads.** The burning of landscape waste must be generated on the property.

## Groot Leaf Collection

Groot will provide leaf vacuum collection services each fall. This collection is for leaves only (no branches or grass). The schedule shall be outlined through notification by the Township. Groot asks that residents rake all leaves intended for collection within three feet of the curb.

## Leaf Burning

The Lake County Board recently voted to amend a temporary emergency ordinance that allows open burning on all properties in unincorporated Lake County from sunrise to sunset only on Tuesdays, Thursdays, and Saturdays. The ordinance also allows open burning from sunrise to sunset on any day of the week if the burning occurs at least 500 feet from the nearest habitable structure.

Burning of leaves and small branches is permitted during daylight hours. Open burning must be 25' from any structure and 50' from schools and roads. Absolutely no burning on roads. The burning of landscape waste must be generated on the property. Maximum size of any burn pile is 5' in diameter and 3' high.



# Dog Waste Management

Dog waste is a major pollutant and contaminant of the water supply (causing a serious health issue). Proper clean up of pets limits the amount of pathogens that can be washed into waterways. Appropriate disposal includes bringing a bag, picking up the waste and then disposing of the trash.

## Benefits

- Results in less organic debris and bacteria in waterways, which can lead to high nutrient levels and low dissolved oxygen levels in streams and lakes.
- Preventing serious health issues to humans and other animals

*Thank You  
Dan Trahan*



## SLIA Board

<b>President</b> .....	Dan Trahan
<b>Vice President</b> .....	Cliff Gartner
<b>Treasurer</b> .....	Ed Meltzer
<b>Secretary</b> .....	Jeremy Vale
<b>Parks &amp; Easements</b> .....	Sarah Owen
<b>Lake</b> .....	Tom Truffer
<b>Beach</b> .....	Peter Lind
<b>Recreation</b> .....	Laurie MacKay

## Garden Club

<b>President</b> .....	Tammie Trahan - tammie.trahan@gmail.com
<b>Vice President</b> .....	Kathy Ford - kpenford13@gmail.com
<b>Treasurer</b> ..	Kelly Dickenson - kelly.dickinson99@yahoo.com
<b>Secretary</b> .....	Peggy Delacruz - Peggydelacruz@gmail.com

### Board Members

Jen Crow	Nancy Hanson
Lauren Rollinger	Jen Scharff
Olga Zavialov	Karen Finerty
Debbie Pomazzal	Nancy Brashear
Marianne Mortenson	