



Sylvan Lake Shoreline

Get the news you need at: www.slja.net

Publishing Dates: April • June • August • October • December

Sylvan Lake Recap!

Greetings Sylvan Lakers,

As we wrap up 2020, I wanted to reflect on what we as a community have been able to accomplish. Although many of our plans and events were suspended, I have been pleasantly surprised at the creative ways our members have figured out how to still enjoy some of our traditions while remaining safe and socially distanced.

Thanks to our Garden Club, our Easter Egg Hunt this year was transformed into a Bunny Train with two bunnies spreading joy and candy to the little ones around the lake. And although our volleyball league had a delayed start, we were able to get in a full season with extra care and lots of hand washing. Carp-o-Rama continued to bring together kids, parents, and adults alike over Memorial Day weekend hoping to catch the largest carp our lake has to offer. Bass fishing this spring was phenomenal, thanks to the efforts of many that brought plant life back to the lake over many years.



Sailboat races were brought back after many years and the Cardboard Regatta generated some amazing designs, colors, and laughs!

Continued on page two

Leaf Burning v Leaf Pick-up

Leaf pick-up, for the first time, has been provided by Groot Wastehauler. This new service, planned by the Fremont Township in conjunction with the new contract for Groot has been scheduled and utilized several times this fall which has reduced the need for leaf burning

We hope that this service is a success and will be available in the years to come.

See Inside for
Important
Information

Santa's Visit



Luminary Walk



**Snowman
Making
Contest**



**LIFE
IS BETTER
AT THE LAKE**

Sylvan Lake Recap! continued from page one

Our lake had more traffic with boating, floating, swimming, and fishing in years past and our Venetian Night turnout was huge! So, although our beach opened late, we still found ways to enjoy the lake given the circumstances.

The Garden Club still has several events planned to finish out the year including the Turkey Trot, Santa's Visit, Luminary Walk, and a Snowman Contest! And hopefully we have another great winter season on the ice with hockey, ice skating, ice fishing, and cross-country skiing.

Regarding improvement projects, the Dam Project was put on hold by Fremont Township for at least several years and our Ravinia Park Project has had a delayed start, but we hope Ravinia will begin soon after permits are secured. The Schwerman Park drainage project was completed with hopes it will help reduce flooding around the basketball court and keep our feet dry during Oktoberfest. Our large raft has been dismantled and will be replaced next year, and we are replacing our older aerator pumps and heads for the lake. Many improvements have been completed around the community with volunteers repairing piers, improving bulletin boards, removing brush, cleaning up entrances, planting flowers and much more! A huge thanks to those around the community who volunteer their time to improve where we live.

So, although we've had to put some of our traditions and projects on hold, we've still managed to adapt and find ways to make Sylvan Lake special. I wish everyone the best holiday season and look forward to a great 2021.

*Sincerely,
Dan Trahan, SLIA President*



Keep Up Your Safety Vigilance

- Wash your hands often for the recommended 20 seconds.
- Keep a safe distance of 6 feet from others you meet.
- Wear a mask in public when you may be closer to others than 6 feet.

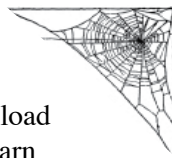


Sylvan Lake Website

www.slia.net

The Sylvan Lake website provides up-to-date information on events and activity around the lake. You can also download the latest Shoreline, participate on a message board, and learn about its history.

The updated website is ready for your use. The only place that requires a password is for the Sylvan Lake Phone Directory under the **Association, Contacts** tab. If you don't have the password, send an email message to Sylvanlakers@gmail.com and request it.



General Ice Thickness Guidelines

When is ice safe?

There really is no sure answer.

You can't judge the strength of ice just by its appearance, age, thickness, temperature, or whether or not the ice is covered with snow. Strength is based on all these factors -- plus the depth of water under the ice, size of the water body, water chemistry and currents, the distribution of the load on the ice, and local climatic conditions.

As a general rule for new, clear ice only:

- * 2" or less - STAY OFF
- * 4" - Ice fishing or other activities on foot

Enjoy the lake this winter, hope for a smooth freeze and BE SAFE!

Time To Clean - Dryer Vent/Furnace Filter

"Failure to clean" is the leading factor contributing to clothes dryer fires. - Please check all parts of your clothes dryer venting and inspect for an accumulation of lint, especially at the very end of the vent as it leaves the house.

Your furnace will be much more efficient with a clean filter and will save you money with less dust recirculated in your home

Please do not park on the street to allow the plows to get through safely.



ECO-CORNER #17

by Jenn Cameron

Specialized Relationships

In November, Fremont Public Library partnered with Wild Ones Lake-to-Prairie Chapter to present an online program focusing on the specialized relationships between native plants and native animals and what homeowners can do to support and enhance these interactions. Various food web connections between plants, insects, and birds directly support animal diversity, promote pollination, and ultimately enhance the natural ecosystems that sustain humans.

Doug Tallamy was the expert presenter (professor, researcher, author ...) for this fascinating look at the oft unnoticed interactions and inter-dependencies going on between insects, animals, and plants in our yards. As homeowners, we each have an opportunity to invite, nurture, and protect these specialized relationships occurring around us, and Doug shared many interesting scientific facts and practical suggestions for homeowners to tip the landscaping scale more towards meeting the needs of wildlife.

FACTS:

- landscaping might be considered ecologically “dead” when it includes too many non-native plants that do not provide the needed food and habitat for wildlife
- each blue jay “plants” or buries approximately 3,000 oak acorns per year and yet only retrieves approximately 25% of the stash later for food
- parent chickadees forage for native caterpillars to feed their hungry young around 14 hours per day, and they will not nest in an area without the right food source

- without insects, the food webs that support birds, amphibians, reptiles, and mammals would cease to function and support life

SUGGESTIONS:

- use native plants which have evolved alongside native insects, birds, and other animals and which encourage nature to not only survive but to thrive
- should there be space in your yard to accommodate a new tree, consider planting an oak tree or another tree native to our area
- think about using native planting material in your yard to attract the butterflies to lay the eggs to hatch the caterpillars to feed the birds ... you get the picture!
- be more mindful to limit or eliminate the (over-)use of pesticides and insecticides

Nature thrives when it is in balance, and in order to support natural ecosystems, we have opportunities to use our yards to support the healthy evolutionary relationships between *flora* and *fauna* by using plants native to our area. We have the power to make a positive difference through our landscaping!

Wishing you a peaceful winter season filled with socially-distanced warmth and good cheer!

See you in 2021!

<https://www.udel.edu/faculty-staff/experts/douglas-tallamy/>

<https://www.udel.edu/canr/departments/entomology-and-wildlife-ecology/faculty-staff/doug-tallamy/>

<https://www.smithsonianmag.com/science-nature/meet-ecologist-who-wants-unleash-wild-backyard-180974372/>

<http://nwf.org/NativePlantFinder/>

Are You ‘W’ or ‘West’

Our Sylvan Lake community has a “West Sylvan Drive” [which goes around the north side of Sylvan Lake], and a “W Sylvan Drive South” [which goes across the south side of the lake]. If you live on one of these streets and do not refer to your street this way, it will cause confusion!



Six or eight years ago, Lake County adopted a new grid system and assigned 5-digit rural addresses to all unincorporated areas, including Sylvan Lake. These addresses provide uniformity and give fire and rescue services safer access to each home. This grid system assigned the same 5 digits to some properties on the north and south sides of the lake.

We offer this clarification because of confusion for delivery services reaching our homeowners. We have had deliveries for West Sylvan Drive dropped off at the matching 5-digit address on W Sylvan Drive South. An ambulance even stopped on the wrong street this past year.

So please refer to your address for all service requests as follows:

- West Sylvan Drive if you live on the north side of the lake
- W Sylvan Drive South if you live on the south side of the lake.

Have Happy Deliveries!



Sylvan Lake Turkey Trot 2020

What Wonderful Community participation!

Once again the Sylvan Lake Turkey Trot was attended and run, walked, strolled and enjoyed by all that participated. The course, a true 5K, was beautifully layed-out and marked for the different laps needed to reach the full 5K.

This years winner, Kalib Carlson (a cross country runner for Greenville University) may have set a pretty high bench mark of 15.28 for our future events. But to run or walk or be pushed in a stroller it was a wonderful community event and we thank all those that participated but especially the volunteer from the Sylvan Lake Garden Club that organized and set-up the Turkey Trot 2020!



Parks and Easement News

Renee Del Missier is new to the board and as we needed another person to share the workload, Renee will be in charge of mowing needs and park equipment repairs.

I will still head up the native maintenance portion and any larger projects, like the one we're waiting to start in Ravinia.

Ravinia Park: Waiting for permit approvals, expect to start soon. The creek will be re-directed slightly so that water flows back into detention ponds. Due to much heavier water loads coming in here, the creek became compromised and dug deeper, completely missing the detention ponds. It will improve water quality as sediment will have a chance to settle again in the ponds, instead of the lake.

Eco-Chics: We are always collecting seed from here as well as other areas, labeling for future seed balls to be made. Since -2- pollinator gardens were added here, one at Schwerman Park and the other at Wildflower Terrace, we have a nice supply now.

We recently had a zoom meeting that included Sandy Washburn, Linda Mihel Diane Capasso, Denise Goldblatt, Jenn Cameron, Renee DelMissier, Fran Pacheco and myself. We discussed our mission statement which will be published soon. It simply states what we all agree and intend on applying to all projects we work on. We felt we needed to explain in better detail what the Eco-Chics are all about and what, why we do what we do.

Linda Mihel, Sandy Washburn and myself were recently allowed to collect seed from Tori Trauscht's property in Diamond Lake. Tori was the founder of the Indian Creek Watershed Project. I served on this board for many years with people representing Countryside Lake, Diamond Lake, and Long Grove

areas that are part of this watershed. In case you didn't know, our watershed joins the upper Des Plaines River Watershed, that eventually meets the Illinois River and then the Mississippi River!

Our Kiosks received much needed repairs that Ryan Haukedahl, Bob Mihel and Diane Capasso did. Diane also spruced up the Library Boxes that she painted several years ago. Plastic is covering them to protect her artwork. Just replace the plastic after you share or borrow.

Maple Park Shoreline

Stabilization: Many native plants are thriving there now. We collected some seed and pulled some bad stuff. The shoreline right now has a lot of Biden's Frondosa which always moves into disturbed soil. Its not a horrible thing, and it wanes away in a few years, which means we will need to re-seed with a variety of native plants/seed. Denise Goldblatt, Jenn Cameron and I collected seed where appropriate as only 5-10 % should every be taken from sites.

Big thanks to Adam Washburn for mowing a narrow trail so people can walk through over to the pier section.

Looking forward to a pier being added along this new usable stretch of shoreline.

Juneau Terrace: John Rollinger, Renee DelMissier, Doug Debruin and myself cleared out weeds in Juneau and removed a couple trees.

Doug announced that he knew how to correct the drainage erosion happening there and then collected the materials and fixed it!! Thanks Doug, its working!!

So many helpers, its a wonderful collective effort we have here ! Thank you all for participating, learning and most of all sharing your knowledge.

Jeri Swanson Easements

Parks

Our parks have been in full use with the beautiful weather that has been gifted to us! Absolutely love seeing all the families who are enjoying the parks.



Maple Park looks amazing with many native plants and a wonderful walking path to meander along the lakeshore. Thanks to Adam and Blake Washburn for maintaining the pathway. Andy Dickinson continues to do a great job with Bjorkland Park keeping it maintained and beautiful. The new benches look fantastic, thanks to the Ford family. The Stempian family donated benches that are at Schwerman Park and Beach Park.

Schwerman Park has a new drainage system that wraps around the basketball court and drains into the existing sewer system. Looking forward to having an Octoberfest with dry feet! To finalize the project, additional soil and seeding will be completed in the spring.

Do you have an interest in upgrading our playgrounds? I am looking for several people to spearhead the parks improvement project.

If you wish to volunteer please contact

Renee: reneefdel@gmail.com
or 847-643-6684.

Renee Del Missier
Thanks a bunch!



From Diane O'Kelly's Newsletter

Closure of Driver Services Facilities until Dec. 7, 2020

Illinois Secretary of State Jesse White is announcing Driver Services facilities statewide will be closed to the public for in person transactions effective Tuesday, Nov. 17 and will reopen on Monday, Dec. 7, 2020, due to the worsening COVID-19 pandemic. White is encouraging the public to take advantage of online services.

Many transactions with the Secretary of State's office may be conducted online at www.cyberdriveillinois.com.

Download the Groot App

Groot now has an app that is so useful. Your pick up days, future events, useful information on what you can dispose of for recycling or garbage, ability to pay through the app, holiday reminders on which day they will pick up and more. Please download it!

Kirk Players Present "The Gift of Magi"

Kirk Players will present a short program celebrating the love and joys of the holiday season. We are excited to share "The Gift of the Magi" as well as a special holiday presentation by our members on Saturday, December 5, 2020 at 7:30pm CST via YouTube. Please go to Kirk Players YouTube channel by clicking this link on Saturday, December 5, 2020 at 7:30pm CST: <https://www.youtube.com/channel/UCRCumToQ7cawRBwQpKtFi2g>

BOX OFFICE CONTACT:

www.kirkplayers.org or
847-521-6192

Master Birdhouse Builder

Master birdhouse builder Dick Zaleski generously donated and installed 2 of his beautiful creations for the tops of 2 dead pines on West Sylvan Drive. The large one he built specifically for Screech Owls. This is only one of the many areas the Eco-Chicks have been working on to help rid Sylvan lake of Buckthorn, Honeysuckle and Garlic Mustard and then planting natives plants.



**LIFE
IS BETTER
AT THE LAKE** 

Garden Club

Tammie Trahan **President**
Laurie MacKay **Vice President**
Karen Finerty **Treasurer**
Nancy Hanson **Secretary**

Other Board Members

Kathy Ford
Nancy Hanson
Jen Crow
Peggy Delacruz
Lauren Rollinger
Fran Pacheco
Mariann Mortenson
Kelly Dickenson
Debbie Pomazol
Marianne Michnowski

SLIA Board

President Dan Trahan
Vice President Cliff Gartner
Treasurer Ed Meltzer
Secretary Jeremy Vale
Parks & Easements

Jeri Swanson

Remee DelMissier

Lake Tom Truffer
Beach Peter Lind
Recreation Laurie MacKay

2020

SANTA'S VISIT

Garden Club Sponsored Event

and

Luminary Walk



Date: **December 5th**

Time: **4-5 PM**

Santa will be on a tractor traveling around **West Sylvan**. (If you live on W. South Sylvan, please find an area at the parks or beach that is socially distanced or wear masks if you can't be 6 feet apart.)

*There will be a treat bag for children standing out in their driveway. If you are unable to attend, leave a sign in front, and we'll leave it by your front door/porch.

* **Letters for Santa!** There will be a mailbox for Santa's letters being wheeled around for *Wish Lists* and *Thankful Thoughts*. *parents a good opportunity to

peek at those wishes :)

Luminary Walk

- Luminary bags will not be provided this year. We are sincerely sorry. We just haven't been able to have enough fundraisers.
- Please remember safety guidelines.

Thank you to all the special helpers who made this possible! You know who you are :)



Snowman Making Contest

Garden Club Sponsored Event

Fun for the whole Sylvan Lake Community

Show us your works of snow art!

Rules:

Have fun! All ages welcome!

Create a snowman in your front yard or at the park. Must be seen and photographed by Tammie Trahan to participate so email tammie.trahan@gmail.com with the location and artist name(s)

*This can be anytime by January 20th. Pictures of snowmen will be posted on Sylvan Lake Facebook page, January 21st. There will be 1st, 2nd, 3rd, 4th place prizes.

*1 prize awarded per household.

Materials needed: (not limited to these materials, however these must be present in order to be considered for prize)

Stick(s)

Rocks or coal....

Scarf (color optional and can be handmade)

Hat (any kind as long it sits on his/her head; can be handmade)

And **snow!!!**



Checker Board Parking

We have been requested by Fremont Township to park our cars only on the north side of W Sylvan Dr. South. This request is focused for the safe passage of emergency vehicles and winter snow plowing, but also for the convenience of other community members driving down our streets.

Checker board parking which restricts the free flow of traffic can also be a concern on all of our narrow streets. Please be aware that it is important, especially for the larger emergency vehicles and snow plows, to be able to pass down our streets.

Your awareness and cooperation is greatly appreciated