



Sylvan Lake Shoreline

Get the news you need at: www.slía.net

Publishing Dates: April • June • August • October • December

Carp O Rama 2020

Another successful Carp O Rama is in the books. Sylvan Lake residents pulled in 26 Carp this year. Congratulations to both John Rollinger for snagging 17 carp & once again defending his crown of most carp caught and to Kathy Schwerman for catching the largest Carp weighing in at 7.25 lbs. Dylan Trahan, Rick Carter & the Seidner's also deserve recognition for making the weigh in very close. Thank you to John Rollinger for his help organizing.



Volleyball

As much as we'd like to start the Tuesday evening volleyball league on time; SLIA had elected to wait until the State & local park districts have provided more detail on the status of their summer sports programs to install volleyball nets. As soon as we have more information to share we will. Thank you for your understanding.

Dave Kruse - Recreation

Troubling Times. . . Call your neighbors & friends!

Neighbors, particularly senior citizens, are not seeing much of each other because of the virus. Think about calling your neighbors on the phone for a "Cheer up" call just to let our neighbors know we care about them, especially neighbors who live alone. We can find out if their needs are being met and just have our Sylvan Lake friendly neighborhood social life extend via a friendly phone call.

Keep Up Your Safety Vigilance

- Wash your hands often for the recommended 20 seconds.
- Keep a safe distance of 6 feet from others you meet.
- Wear a mask in public when you may be closer to others than 6 feet.



EVIL EMail is Phishing for You

Right now, scammers are flooding e-mail accounts with alerts that look like they're from legitimate companies.

The fake emails are known as phishing scams.

They have the identical logos as banks, computer companies, other major businesses and email friends and you'd be shocked at how many people think they're legit- and give up their personal information.

Think of your email account as a fertile fishing ground for internet scammers looking to hook you with just the right line: "Final Warning!", "Account Alert", "Your account access has been locked" or a link from a know email address.... But even the slickest scam emails have warning signs- once you know what to look for.

Here are 6 common red flags:

- #1: Bad return email address.
- #2: Bad spelling
- #3: Poor grammar
- #4: Excessive, unnecessary spacing between words
- #5: A generic greeting that could easily apply to anyone, with reference to you directly
- #6: Instructions to click on a link or open an attachment to "sign-in", "reset password", "verify account", or download information.

Anytime an unsolicited email directs you to click on a link or open an attachment, for any reason, **that's a sure sign it's time to hit the delete button.**

Increased Car Break-Ins at Forest Preserves

Protect Yourself Against Vehicle Break-Ins

There has been an increase in vehicle break-ins within Lake County Forest Preserve parking lots since the stay-at-home order was activated. Every single vehicle that has been burglarized had a valuable item left inside. Lock your car and do not leave anything of value exposed in your car or lock valuables in the truck.

Notice - Regarding South Sylvan Repaving

South Sylvan Drive is scheduled for repaving in 2021. Because of the effect that may have on driveway aprons, the Highway Department wants suggests residents postpone any driveway improvements until the paving is complete. Curb replacement will require that we sawcut a section of the driveway aprons to build concrete forms, and we would hate to cut into a new driveway. Also, any landscaping within 2 feet of the curb along the right-of-way would be disturbed. As always, I can be reached at 847-223-2848 or highway@fremonttownship.com with any questions.

Alicia Dodd - Fremont Township Highway Commissioner

Thank you

A heartfelt thank you to all my sweet neighbors for your kind words of comfort to me and my family. I am truly grateful.

Love to you all,
Betty Neises

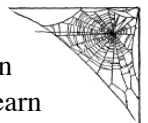
Tax Bills due Next Week

According to Lake County Treasurer, Holly Kim, Tax bills have been mailed with due dates of June 8th and September 8th. Due to the extension of the shelter in place until May 31st, the Lake County Treasurer's office will remain closed to the public.

Sylvan Lake Website

www.slia.net

The Sylvan Lake website provides up-to-date information on events and activity around the lake. You can also download the latest Shoreline, participate on a message board, and learn about its history.



The updated website is ready for your use. The only place that requires a password is for the Sylvan Lake Phone Directory under the **Association, Contacts** tab. If you don't have the password, send an email message to Sylvanlakers@gmail.com and request it.

State of the Lake

By Gary Goldblatt. SLIA President

Greetings fellow Sylvan Lakers! A lot has changed since our last Shoreline. 2020 will be remembered for a lot of things, mostly challenging but through this difficult time Sylvan Lake, for me, has remained a great place to come home to, to shelter in place and to continue to socialize even through distancing. It's been wonderful seeing how this community has endured through this challenging time. The white ribbons on trees, the pictures and inspiring words and thank you's in windows, the good looking gardens, impromptu gatherings, parade of dogs, families and individuals who brighten our streets while walking and all of the positivity. I am confident that Sylvan Lake will continue to move forward and will continue to be that fun, safe and beautiful community in Lake County. Thank you all for following the Sylvan Lake covid-19 asks.

Thank you to the many volunteers who came out to help with Carp-O-Rama, clean up day chores, and the installation of the boat pier. Covid-19 may slow us down a bit but it can't stop us from enjoying some of the great activities that make Sylvan Lake a unique and special place to live.

The last shoreline I highlighted some high level action items per the Dam project. Since then, the SLIA board sent out communication updating the community that the Dam and Spillway project is on hold indefinitely. Our lake will most likely not be lowered this year or next. In the meantime, Fremont Township has challenged some engineers to take a look at some alternative options for repair and to assess the longevity of our current dam and spillway and assure us that full liability is on Fremont Township. We will keep all apprised as this process continues. In the meantime,

it is encouraged that home owners that live on the lake and have shorelines/piers that are in need of repair, move to make the repairs and upgrades. One of the biggest battles our lake faces everyday is erosion. We are working hard at making improvements at the run-off entrance ways into our lake, but that is only a part of the solution as member shorelines must contribute to holding back erosion and controlling runoff. (hard scape and soft scape options)

It's nice to see the one garbage hauler process working. Less trucks and a better deal. Reminder: Lake county is still under a no-burn ordinance and leaves can be bagged for recycling or used as mulch. Please don't put leaves on any easement property.

OTHER UPDATES & IMPROVEMENTS:

- *Gilmer road expansion is planned for 2021-also affecting the Dam/ Spillway project.
- *Re-directing the catch ponds in Ravinia and shoreline (ETA Fall)
- *Installing a step Bridge in Maple park (Planning stages)
- *Replacing some of the wood in the playground equipment in Schwerman park (planning stages)
- *Assessing drainage around the basketball court in Schwerman Park (in progress)

SLIA current YTD. Financial highlights:

Balance sheet:

Total Liabilities and Assets TY
\$241.6 vs LY \$228.1

Profit and Loss:

YTD: \$82.3 vs LY \$77.8
(trending better than budget)

Expenses: YTD \$6.6 vs LY \$8.1
Legal and professional fees YTD:
\$2.4 vs LY \$2.9

Receivables: YTD: \$5.8 vs LY \$ 9.1
*We are in good shape to keep making improvements

SLIA Web site:

Check out the SLIA Website. Up and running and will continue to be a useful tool for all things Sylvan Lake.

Website name : slia.net The only place that requires a password is for the Sylvan Lake Phone Directory under the control tab. If you don't have the password, send an email message to Sylvanlakers@gmail.com and request it.

Your 2020 SLIA board:

President: Gary Goldblatt
Vice President: Jeanne Peterson
Treasurer: Ed Meltzer
Secretary: Dan Trahan
Parks & Easements: Jeri Swanson
Lake: Tom Truffer
Beach: Cliff Gartner
Boat Director: Brian Wawrzyniak
Recreation: Dave Kruse

I encourage everyone to attend the monthly Board meetings. They are held on the third Wednesday of every month except December. 7:30pm-9pm at the Country Side Fire station on Midlothian rd. This is where great ideas, suggestions can be shared and acted upon. Don't make the annual meeting the only meeting for participation. The SLIA board meets on the 3rd Wednesday of every month, except December, from 7:30-9 p.m. at the Countryside Fire Station. In the interim and always, please feel free to reach out to any of the Board members if you have questions, comments, suggestions and the like.

See something,
Say something, Do something!

Until the next time...
Happy Summer Everyone!!!!

Dog Poop

It is not the dog's problem.

Have you taken a walk lately? Watch your step!

There is still a concern with dog poop! In a recent walk around the lake evidence was seen where a large dog contribution was laying on the pavement and another instance of a nicely bagged dog deposit sitting on the curb.

Come on dog owners... take responsibility!

Here's the message:

- Be a good community member.
- Bacteria and diseases from pet waste can be transmitted to people and other pets.
- Bacteria, parasites and pathogens in dog dodo can contaminate soil and get washed into the lake.
- SLIA, through the rules and regulations, supports and enforces picking up after YOUR pet. To encourage this behavior, SLIA donates dog bags which are dispensed at several SLIA locations.

Be the neighbor you want. In other words, be a good ambassador for dog owners by picking up after Fido. No one wants to start DNA testing dog poop, filming squatting dogs or have an awkward conversation. But we could...



Boat Stuff

Sylvan Lake Boaters

At our annual meeting last September members of our community were requesting Temporary Boat Parking at the more popular piers. Temporary boat parking signs have been installed at one section of the beach paddle boat pier, Ravinia, Wildflower and Juneau.

Have a wonderful summer and be safe.

Brian Wawrzyniak

Ahoy Mates!!!

Did You Forget to Claim Your Jolly Rodger???

The Jolly Rodger was sold in 2019 and is a fairly new, pre-pandemic peddle boat.

The Jolly Rodger has attempted to socially distance itself three separate times by floating away.

The new captain hasn't claimed the pirate ship from the previous captain (old boat sticker #1537).

Currently, the peddle boat has been practicing the art of submarining in Ravinia Bay. The Jolly Rodger is sea worthy. The buccaneer who bought the pirate ship could sail the Seven Seas or at a minimum, peddle Sylvan Lake.

If you are the new captain, please complete a Boat Registration Form and we'll peddle, talk like pirates on National Pirate Day!!!

Please email questions to: sliaboatsticker@gmail.com

Arrrrr!!!!!!



Yes, there is a limit to mooring on Sylvan Lake.

Parks and Easement News

Jeri Swanson

As you all know, the formal Clean Up day was cancelled and mulching was only done in Bjorklund Park and the beach areas.

Cliff Gartner, Dave Benedeck and Renee Del Missier captained the beach. Renee captained Schwerman Park to spread top soil in detentions from cars parking onto the grass and general erosion.

Kathy Ford captained Bjorklund Park. It was a last minute decision to go ahead with these projects due to Covid restrictions and distancing needed, which is why no lunch was served this year. As far as I know, this was the first time we didn't gather afterwards for lunch.

I'm sure many are wondering why some things were done and not others, it was simply due to our decision just a few days before the weekend at the board meeting that we decided to go ahead. There was no tree limb pickups, but we can do that in the fall at another Clean Up Day.

The Eco-Chics did a lot in the past 2 months removing buckthorn in Maple Park and along the fenceline on No. Sylvan.

3 workdays netted a total of 37-1/2 hours worked by 15 Eco-Chics. We also got a hand from Bob Mihel and John Rollinger cause they stopped to see what we were doing. Thanks Guys!

My neighbor for the past 30 years, Cindy Wittje and I worked in Ravinia removing buckthorn, Dame's Rocket, Garlic Mustard and honeysuckle May 16th for 3 hours.

The garlic Mustard is in bloom right now, little white flower heads, pull and dispose, as they now have

seed pods ready to burst. If you pull it earlier in the month of May, the pods have not formed yet, so the pulled plant can be left to decompose without worrying about it re-seeding.

Dame's Rocket is that imposter of phlox, very pretty, but also forms seed pods. By the time it blooms, any day now, it too will have seed pods forming, so it must be taken off site and put in the garbage.

While the Eco-chics were working, we found a few areas where neighbors of these public areas are disposing of their yard and leaf waste into public areas. Please do not do this! Adding leaf piles into the woods blocks natives, they can not reach sunlight fast enough as they were designed by nature to withstand only the leaf covering that happens naturally in a wooded area. Remember these are public areas, belongs to all our residents.

2 Volunteers needed:

For one project: The kiosk on South Sylvan and the one @ Bjorklund Park are in need of an additional layer of cork board added. Adhesive would do the trick! You would need to purchase cork at a craft store, maybe hardwood store, adhesive and keep your receipts and we will reimburse you.

Other project: The bench in Wildflower terrace was repaired by Paul Stempian last fall and needs to be painted. Please contact be regarding the color first. Jeri Swanson 847-507-2760

Now for a nice story:

Poul's Landscaping, our contractor for mowing our public areas, (owned by our neighbors Wendy & Dan Kjeldbjerg), had a

very nice idea when Covid hit town. They launched "We Love Nurses" and offered to do a spring a clean up for a nurse in our neighborhood. They needed a nomination, so I submitted Jane Molsen's name. The free service included removal of remaining leaves, edging, pruning of damaged branches, hand raking, over-seeding the lawn and cutting the turf if needed.

Thank You Poul's & Kjeldbjerg!! Love these good stories during this difficult time.

Jane has been a nurse for many years and is currently employed @ Winchester House.

Another nice tidbit:

Sandy Washburn suggested we contact Openlands Conservation to advise us on our existing tree inventory and also make recommendations for what and where future trees should be added. She did contact them and when restrictions are lifted they will come out and do so for a small donation. Great program, Great idea Sandy!!

Got a Parks/Easements idea, grumble ?? Jeri Swanson email is: swan458@sbcglobal.net, cell # 847-507-2760



ECO-CORNER Lucky # 14

Our Indian Creek Watershed

At the end of April and in May our area received in excess of 3" of rain over just a couple of days, and while this does happen occasionally, I observed how the water accumulated on the ground and then rushed across yards, driveways, roadways, and down our SLIA easements into Sylvan Lake. Your thoughts might have been different from mine, but *I* was thinking, "Wow, look at how much WATER is being SHED from the land!"

A WATERSHED is an area of land where water runs off (or even under!) in a certain direction to join with a larger body of water. Various smaller watersheds flow into a larger network of streams, rivers, ponds, lakes, and ultimately, oceans. Our local Sylvan Lake area is part of the larger Indian Creek Watershed. Indian Creek is actually a *sub*-watershed that drains towards the Upper Des Plaines River Watershed and then directly flows to the Des Plaines River. The Des Plaines River continues to flow to the Kankakee River, and at that confluence it becomes the Illinois River that flows to the Mississippi River and ultimately to the Gulf of Mexico. Amazing!

A watershed functions by temporarily storing (holding) and/or transporting (moving) a quantity of water (**AND EVERYTHING IN IT, by the way*) from the land towards another usually larger body of water. The *quality* of a watershed ecosystem can be affected by many factors including land development, usage, and restoration; invasive species introduction (*uh oh*); native species *re*-introduction (*yay*); the recycling of chemicals (*YES*) instead of dumping contaminants (*NO*); etc..

Sylvan Lake is but one part of the Indian Creek Watershed system, yet how we manage, for example, the water run-off from yards and easements, our fertilizer and yard chemical usage and disposal, proper vs. improper dog poop disposal, etc., these types of neighborhood actions or inactions and others can have lingering and far-reaching effects not only on our local area but on the lands, wetlands, and waterways our Indian Creek watershed ultimately connects with.

Water movement in and across a

watershed system carries the *GOOD* (native species for re-establishment), the *BAD* (dumped toxic chemicals), and the *UGLY* (microbeads and other plastic garbage) a long, long way away from a local area. Any awareness being raised generally along with specific positive impacts we can make right here in our Sylvan Lake neighborhood carries downstream - literally.

<https://science.howstuffworks.com/environmental/conservation/issues/watershed1.htm>

https://cfpub.epa.gov/watertrain/moduleFrame.cfm?parent_object_id=586

<http://www.indiancreekwp.org/>

<https://www.lakecountyil.gov/4164/Indian-Creek>

<https://www.lakecountyil.gov/DocumentCenter/View/11363/Indian-Creek-Watershed-Based-Plan-PDF-?bidId=>

