

August, 2018



Sylvan Lake Shoreline

Get the news you need at: www.slia.net

Publishing Dates: April • June • August • October • December

Oktoberfest 2018 October 6

As some of you may know, I have volunteered to Captain the legendary "Sylvan Lake Oktoberfest". It is scheduled for Saturday October 6th, so mark your calendars.

To accomplish an event of this magnitude the Sylvan Lake Improvement Association relies on volunteers. So, why not join the party-within-the-party and volunteer to be a part of "**Team Oktoberfest**". We are looking for Committee members as well as anyone who has time to help with the abundance of preparation tasks needed. Please send an email to resqk_9@hotmail.com if you want to be a part of our team.

Luke's of Mundelein will again be serving the food. Plus, due to many requests, Luke's has agreed to add their celebrated Homemade Italian Beef to the menu. The Association will be providing Wine, Water, Soda and "Beer" for purchase. (positive ID will be required).

Thank you,
Christine Seidner

Sylvan Lake Recreation!

Volleyball League

Volleyball is in full swing and we are looking forward to the National Championships!



Referendum for Single Waste Hauler For Unincorporated Fremont Township Residents

From the Fremont Township Administration:

At our July Township board meeting, the Fremont Board of Trustees voted to place a question on the November Ballot to allow the board to contract with a **single waste hauler** in unincorporated Fremont Township. If passed, this would apply only to residential areas. but all of Sylvan Lake

The ballot question presented to voters would read as follows:

Shall the Township Board of Fremont Township, Lake County Illinois, be authorized to exercise the powers of the "Township Refuse Collection and Disposal Act" as provided in Article 210 of the Township Code, 60

ILCS 1/210-5, *et. seq.*, to enter into a contract for the collection, disposal, composting or recycling of garbage, refuse and ashes within the unincorporated area of the Township?

State of the Lake

By Gary Goldblatt. SLIA President

Greetings fellow Sylvan Lakers!
Fall is just around the corner and it's such a beautiful time of the year here at Sylvan Lake...all of the color and change of seasons is great.

It's budget time and the Board has been busy with looking at projects and improvements over the next several years to see how we can fit those into our budget that has a tight net operating income. The 2019 SLIA budget will be shared in advance of our 9/26 annual meeting. The biggest and most exciting project is the Maple Park shoreline restoration project. The main goal of this project is to clean out the debris, control the water run off and shoreline erosion in that area of the Lake. (Not a dredge, but grading) More details to follow as we are in the planning stages now. Junau Terrace has been completed and looks great. Thank you to Fremont Highway dept, Pouls Landscape Co, Residential Tree service, Debbie Wawrzyniak, Jeri Swanson and Mark Anderson for being great partners in this project.

The Gilmer road expansion project is continuing to move forward and for the last year, the County has been acquiring land in order to make this project work. Two very small parcels of SLIA association land, by our South Sylvan Lake entrance and our Hillside/Midlothian entrance have been purchased by the county. These small parcels will enable the county to enhance our entrance ways and right-of-way in these two locations. Purchase price was \$3300.00. I will have drawings and complete information from Santacruz Land Acquisitions available for review at the annual meeting. The receipts from this sale will be put in our reserve escrow funds.

Reminders/etc:

From Fremont Highway Dept.

Fremont Township does not routinely run chipper trucks through Sylvan Lake picking up neighbor tree debris etc. This is done twice a year during our Spring and Fall clean up days. If you have tree trimmings etc, please make arrangements on your own to have them picked up and hauled away. They cannot be left on the sides of the road. Sylvan Lake does not own the roads and rights-of-way. Fremont township does not want leaf burning done on the streets or curbs as well. This causes road damage and is a township liability. This practice is also a violation of county and local fire ordinances. There is good news though: the Fremont Board has passed the proposal for a single garbage hauler in all of Fremont township. This proposal will be on the November ballot. If passed, there will be so many advantages:

- less garbage trucks through our neighborhood,
- better pricing that may include senior discounts,
- an option for leaf & debris vacuuming instead of burning.

Your 2018 SLIA board:

President: Gary Goldblatt
Vice President: Jeanne Peterson
*Treasurer: OPEN
(need a volunteer)
Secretary: Lynda Throm
Parks & Easements: Jeri Swanson
Lake: Lee Dickinson
Beach: Cliff Gartner
Special Projects:
Brian Wawrzyniak
Recreation: Dave Kruse

*There will be 3 Board positions opening in September. Who wants to join?????

I encourage everyone to attend the SLIA monthly Board meetings on the third Wednesday of every month except December. 7:30 pm-9: pm at the Countryside Fire station on Midlothian Rd. This is where great ideas, suggestions can be shared and acted upon. Don't make the annual meeting the only meeting for participation. In the interim and always, please feel free to reach out to any of the Board members if you have questions, comments, suggestions and the like.

SLIA Web site:

Check out the SLIA Website.

It is up and running and will continue to be a useful tool for all things Sylvan Lake. Site name:
www.slia.net

Check Your Phone Listing In The Sylvan Lake Phone Book.

The SLIA website has the phone list of all SLIA neighbors. Please go into the site and check that your phone listing is correct.

To reach the phone list, go to website:

www.slia.net

Then select Association
and then Contacts, + password

If you do not know the password, send your name and Sylvan Lake property address to sylvanlakers@gmail.com and we will send you the password. If your entry is wrong, send the correction to the same email - sylvanlakers@gmail.com -- and we will correct it. The next update to the full phone list will be put on the website in 60-90 days.

Until the next time...

Happy Sylvan Lake-ing all!!!

Sylvan Lake Celebration 2018!

A huge THANK YOU goes to all the volunteers who spent part of their 4th celebration to help make the picnic another great success. All at the picnic had fun, good food and great conversation and wonderful weather.

The weather was beautiful, our Countryside Fire Department again shared their fire truck and sprayed water from the lake over the beach area for the thrill of all!

Games were fun and the kids (and parents and grandparents) had a great time. Once again the wonderful food and drinks were the crowning touch!

We are blessed to have this country and community.



4TH OF JULY



Parks and Easements

by Jeri Swanson

Our reports from Integrated Lakes Management (ILM) have continued to be promising in that we are retaining good native species instead of losing them.

Native species in our woodlands are important for biodiversity, if one species has a problem, we have lots of others that sustain the areas. I don't know about your yards, but mine this year produced some plants I thought were gone. Seed banks are miracles ! I have seen many woodland orchids in your yards. Thanks for not pulling them out. If you leave an area alone for a few years, lots of surprises reappear, not all bad ones either. Oh.... the bunnies just loved all the surprises, too.

We are getting closer to restoring the public shoreline in Maple Park. There is 300 feet of public shoreline that was once rehabbed for erosion control using RR ties. That was about 30 years ago. Most of the RR ties are in the lake as well as the piping that held them in place. We will be hiring Integrated Lakes Mgt. to remove all the RR tie debris and the piping as well as a broken pier. Then the shoreline will be regraded and we will seed and plant deep rooted native species appropriate for waterfront stabilization. An open area will be created for boat access and possibly a boat rack in the future. Where that will be placed has not been decided on. The contractor, ILM, will be doing all the work from the water's edge, using a special aquatic vessel to haul away all debris over to the boat ramp and placed in a dumpster. The idea of using rock or rip rap doesn't look promising as the force of the water flow there is too flashy and we could lose it all. We are experiencing way more water coming into our lake the last

few years due to more impervious surfaces from the developments nearby. Lots more driveways and roads where there was once farm fields and prairie that soaked up lots of water.

ILM will be at our Annual Meeting in September to talk about shoreline stabilization. Bring your questions !

Juneau Terrace curb work and new pathway are complete ! Its a very comfortable walk now ! We will continue working on thinning out the overgrown vegetation and possible add some new plants. For now we really need to get a few years worth of leaves, twigs and weeds out of there so it can properly drain. Poul's Landscaping designed and built this. Watch for an E-Blast on workdays to help out.

Also watch out for large trees that may look a little sad. Please contact me if you think there is something wrong with a tree on public property so we can address that problem before it falls over. Oak trees root system is only 6" under the soil. When we have large rains, then strong winds, they can fall very easily. In the next few weeks I will be meeting with Residential Tree Service, the tree company we have been using now for a few years, and we will attempt to "rate" as many trees as possible that appear to be ill or in need of a good hair cut.

The large dead oak in Bjorklund will NOT be completely removed. There is a line drawn on it where the township will stop cutting. This is so we can make a beautiful bench out the base as so many kids love to sit on the burl and watch their parents play volleyball. Not to mention the many adults who grew up here and

have a relationship with that tree.

The Pollinator Gardens in Schwerman Park and Wildflower Terrace are OUTSTANDING! Great variety and lots of bees, butterflies & hummingbirds are feasting in both areas. Please do not pick these flowers because the whole point of planting them was to give pollinators a chance to survive and pollinate other flowers, trees, fruit and vegetables. Every 5th bite of food we eat is because of a pollinator.

Jeri Swanson:

swan458@sbcglobal.net

Township Brush Pickup Only on Special Occasions.

The township only comes by twice a year, **after the spring and fall cleanup days**, to pick up some of our tree branches and clippings.

Please do not put trimmings out on the curb expecting the township to pick it up except on those special scheduled dates.





110 Le Baron Street, Waukegan, IL 60085 | (847) 244-6662
info@ilmenvironments.com | ilmenvironments.com

NATURAL AREA REPORT

Site Sylvan Lake Parks Date 06-06-18
Service Task Description 2018 Natural Areas Maintenance
Personnel Amy M
Wind 8mph Direction S %Humidity 64 Sky Sunny, then Rain
Drought No Air Temp 70 %Chance of Rain 50%
Target Plants Phalaris arundinacea, Cirsium sp, undesirable non-natives Signs Posted Yes
Herbicide Name Brand AquaPro, Milestone Delivery Method Backpack
Active Ingredient Glyphosate, Clopyralid Herbicide Rate/Amount 3%7.68oz, 0.5%/1.28oz
Surfactant Name/Amount Cidekick II/ 4 oz Type of Carrier/Amount Water
Restrictions 48hr REI Total Amount of Dye Used 0.01gal
Total Amount of Mixed Herbicide Used 2 gal AquaPro/Milestone

JOB PROGRESS AND COMMENTS

Today I performed a maintenance visit on the natural areas in Maple and Ravinia Park. Primary targets were Reed Canary Grass, Canada Thistles, and Dame's Rocket. Dame's Rocket and any Garlic Mustard I found were hand-pulled and removed from site. Another priority today ended up being Yellow Flag Iris, an invasive Iris that is almost indistinguishable from our native Blue Flag Iris until it's in bloom. Fortunately there were plenty of blooms today for both the Yellow Flag Iris and the Dame's Rocket, facilitating a thorough treatment.

With the rain in the afternoon I moved on to Maple Park, which had very few things that were going to require chemical treatment anyway. I pulled Dame's Rocket, Garlic Mustard, and Curly Dock, and trimmed the few small clumps of RCG I found to the ground to prevent seeding and encourage low resprouts to facilitate an easier fall treatment. I will also handwick Cattails and Phragmites at that future visit.

I have gushed about the great condition of these parks before but I'll say again that these are some very nice natural areas. I would recommend a hearty Woody Removal visit with enough time to get through both parks thoroughly, and with that and continued maintenance these will be some absolutely top-notch woodlands.

Report By Amy McReynolds Reviewed by John Bialek Digitally signed by John Bialek
Date: 2018.06.17 22:57:05 -05'00'

Sylvan Lake Regular Board Meetings

Regular meetings of the SLIA Board are held on the 3rd Wednesday of each month as follows at:

Countryside Fire Department
801 S Midlothian Road,
Mundelein 7:30 to 9:00 p.m.

Upcoming meetings are:

- August 15
- * **September 26**
[SLIA Annual Meeting]
- October 17
- November 14 - 2nd Wed.
because of Thanksgiving holiday.
- No meeting in December

All Sylvan Lake Association members and guests are welcome to attend. Each meeting includes a member's forum where homeowner's can present issues of concern.

Meet and Greet

Jessica Vealitzek, who is a candidate for the Lake County Board, District 10 (includes Sylvan Lake), attended a "Meet and Greet" at Linda and Bob Mihel's home on July 19. She answered many questions from Sylvan Lake residents who attended and explained what she hopes to focus on if she gets elected. These topics include the following: Fair property taxes, Renewable energy and green jobs, Thoughtful development and connected communities, Adequate mental health resources and Common sense laws that keep children and families safe from military-grade weapons.

Linda Mihel

Juneau Terrace Work

On Monday, July 16th, work began at Juneau Terrace on Crescent. It involved removing the old concrete steps. As a result, the road was closed for a period during the day Monday. An area surrounding the work site was also needed for the equipment access and clearance.

Sylvan Lake Board



Rag Weed Season!

Giant Ragweed

This is giant ragweed, **from 6-9' tall**. The seeds are at the top. Notice the large 3 fingered leaves. Right now around Sylvan Lake it is between 3-4' tall and no seed heads. Perfect time to pull them, the ground is moist and they slip out real easy. Please place in garbage. If you or anyone you know has allergies to this, get rid of it for them, or ask someone for help. Handling it can cause their allergies to react. Not only is this a problem for human allergy sufferers, but our pets as well. Besides that, it robs surrounding plants of air flow and moisture.



Regular Ragweed

This is regular ragweed, about **6" tall**. Note the lacy leaves.

Please pull and put in garbage before it "blooms".



West Nile Virus

There have been reports of West Nile Virus in our general area this summer. For the safety of our Sylvan Lake community, we should all follow basic preventive steps:

- Always wear mosquito repellent outside, and
- Remove any standing water where mosquitos can breed. This includes even the smallest amounts of water puddled in tires, garden tools or children's toys.

We have seen a few dead birds around our area, but birds can die for many reasons. Out of caution, there is a Lake County West Nile Hotline that should be called to report the location of dead birds. The County will not come out to the location, but they track the location. That number is (847) 377-8300.

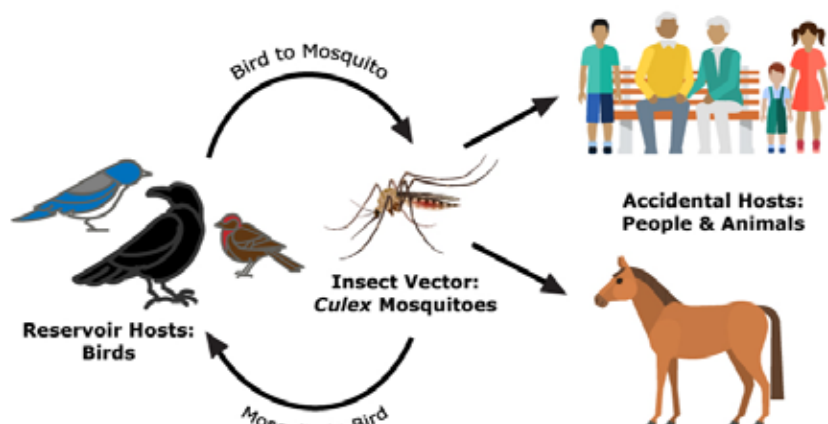
Bear in mind that use of insecticides will also kill our pollinators which include butterflies, bees, etc. as well as other insects that birds, frogs and bats eat. Chemicals used to kill mosquitos will also kill many of our valuable insects as well.

Mosquito Surveillance Program

The Lake County Health Department actively conducts a multi-faceted mosquito surveillance program in Lake County. Beginning in late-spring and continuing into the autumn, a series of traps are set around the county, including within the Lake County Forest Preserves. At each site a pool, or batch, of mosquitoes is tested weekly for West Nile virus. Areas of stagnant water are also investigated throughout the season for the presence of mosquito larvae, specifically from the Culex mosquito which is the primary carrier of West Nile in Illinois. Finally, the locations of dead birds are monitored to assist in the assessment of potential West Nile virus activity. The Health Department works closely with the municipalities, townships, and the Lake County Forest Preserve District in monitoring the mosquitoes that may pose a public health threat.

Thank you, Jeri Swanson

West Nile Virus Transmission Cycle



Please Remember Keep the Lead Out

Fishermen, please remember about the dangers of using lead-based tackle! Wisconsin DNR has put out a lot of warnings regarding this problem. Especially for our waterfowl, we need to be aware of the problem. Thank you!

Water Balloons

Balloons

Please don't use balloons or water balloons at the beach. Little children will pick up the leftover balloon pieces from the sand and put them in their mouths. Swallowing sand is one thing; balloon pieces is another.

If you see any balloon pieces around the beach, please take a moment to pick them up for garbage disposal.

Flammable materials

Please also stop using fireworks and flammable novelties around the community until we get some rain. It's so dry that they pose a fire danger. Be sure you talk to your kids about this.

Thank you
Sylvan Lake Board



ECO-CORNER # 5 ~ by Jennifer Cameron

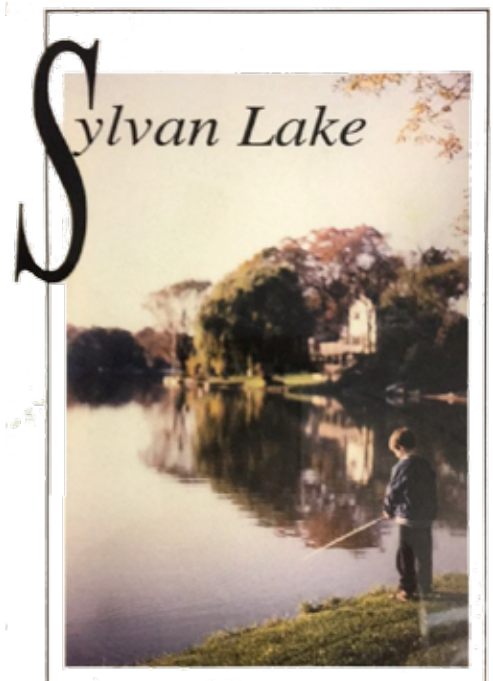
Did you know? Sylvan Lake was the first manmade lake in northern Illinois! In the early 1920s the lake was created by a dam built on the original slough and over time the low-lying swampy basin collected water from rain and snowmelt along with natural run-off from the nearby forests and open prairie lands. As nearby surrounding lands began to be cultivated for agriculture and developed for homes and businesses, what used to be a fairly clean and natural water run-off years earlier began to carry more man-made pollution, excess sediments, and chemicals.

Sylvan Lake Improvement Association (SLIA) had its first meeting in 1940, and its established purpose was to maintain the lake, parks, and neighborhood easements and also to engage in activities beneficial to the community. In order to be responsibly proactive in maintaining the quality of the overall Sylvan Lake ecosystem, the monitoring, evaluating, and addressing of environmental concerns required - *and still requires*

- regular attention and oversight. The enjoyment and value of living around a healthy body of water is part of what is so special about being a resident here!

In 1980 the lake level was lowered and bays were dredged to remove excess silt and decayed leaves which had accumulated over time and threatened to reduce the depth and quality of the entire lake, and it was noted back then that dredging would likely be required again in the future. Ongoing efforts to maintain the lake clarity and quality specifically include observations of the general health of the fish population, activities of other aquatic (water-based) and visiting terrestrial (land-based) life, algae treatments are occasionally required, and an aeration system is active in the lake.

SLIA attempts to keep residents informed of plans and projects impacting our lake and surrounding neighborhood lands, and through its various sub-committees and resident volunteer efforts, a variety of community needs are addressed



1991 Sylvan Lake directory cover picture.

such as playground and beach safety, recreational and social activities, in addition to lake and common-use land management. ***This is our Sylvan Lake***, and we have the everyday responsibility and privilege in today's hustle-bustle world to *both* maintain and enjoy the kind of lake life others can only dream about!

Please remember to check out the newly updated Sylvan Lake website for more information:

www.slia.net

Fun Facts to Share! by Brian Wawrzyniak. Special Projects Committee

1. Currently, the Sylvan Lake Community Armada has 161 vessels registered. Kayaks and peddle pontoon boats represent 35% and 7% of the population, respectively.
2. Before a boat owner receives a sticker, the process requires a check to ensure that the property owner's assessment has been paid in full. This contradicts the rumor of "giving up your first born to obtain a sticker." The person issuing the stickers does not have access to financial information.
3. We don't need no stinkin' badges but we do need completed forms! These forms are on the SLIA website as well as the communication board at the beach.
4. Adult beverages taste better on registered boats (that is my story and I am sticking to it).
5. Sylvan Lake removed another abandoned boat this summer. Since 2016, we have removed 15 abandoned boats. We are lucky to have the township supply the dumpster (thank you). Many thanks to people that helped move the ship wrecks.
6. Dirty boats do float but dirt is bad for sticker adhesives. Clean the perfect sticker location prior to applying your unique numbered Sylvan Lake branded sticker.

Have fun and stay safe on the lake!