



October, 2009

# Sylvan Lake Shoreline

Get the news you need at: [www.slja.net](http://www.slja.net)

## Leaf Burning

Its that time of year again!

As we prepare for the annual harvest of leaves from all our wonderful trees we are reminded of what we can do to make it a more pleasant experience for all.

Around the lake we have the usual leaf burning in the street. We ask people to clean up the ashes before the next rain washes things into the storm sewers and from there into the lake. Other suggested guidelines are:

- Be courteous and respectful to your neighbors, especially those with breathing problems. Let them know before you burn.
- If you can, burn several small fires instead of one large fire. The leaves will burn faster this way, reducing air pollution.
- Do not burn in ditches, drainage ways or within 25 feet of a body of water.
- Do not burn on windy days, or days when the wind blows towards your neighbors.
- Do not burn wet leaves. Smoke from such fires stays closer to the ground and longer in the breathing zone.
- The best time of day to burn is from mid-morning to mid-afternoon. The smoke clears the fastest at this time of day.
- Always attend, manage and control your fire. Always have a hose or water source nearby.
- Open burning of anything other than yard waste, such as garbage, is not permitted.



Thank you for your help in keeping our own special resource, Sylvan Lake, clean.

## Upcoming Events

### Oktoberfest!

Sat. Oct. 17 @ afternoon and evening- Oktoberfest! Don't forget to volunteer to help before, after, and/or during.  
(See special flyer for more details)

**Santa's Visit** - December TBA

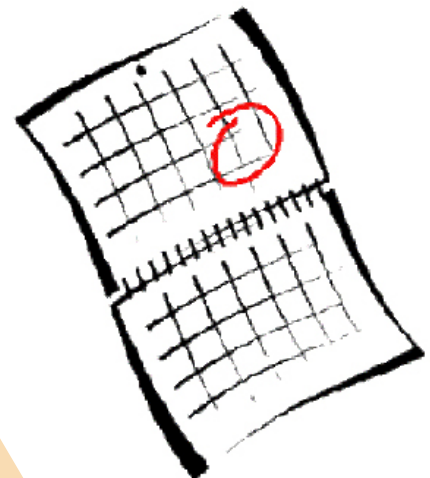
### Future Board Meeting Dates:

November 17<sup>th</sup>

– 7pm @ Sam Ford

January 12<sup>th</sup>

– 7pm @ Deb Kvien



## SLIA Board Meeting September 16, 2009

Meeting at  
7:00 p.m.  
at the home  
of Steve  
Magnusen.  
The following  
Board  
members were  
present: Kevin  
Adler, Dan Trahan,  
Mark Anderson, John Hynds, Steve  
Magnusen, Mike Trahan, and Doug  
MacKay.



**Beach** - Dan Trahan reported piers and beach closing would occur the 26<sup>th</sup> of Sep. Received a bid for a new section of sailboat pier approved at earlier Board meeting. Planning on adding lights to the shed both internally and externally.

**Parks/Easements** – Steve Magnusen discussed the 319 grant. A new request for pricing was submitted to Alexander tree service- Steve will report back.

**Lake** – John Hynds reports that sailboat beach is complete, still investigating the best way to refurbish old piers. John will work on the lake pumps over the winter and investigating vandal proofing.

**Treasury** – Kevin reviewed the 2010 budget to be presented at the annual meeting.

**Other** – Mike Trahan discussed Buckthorn. Jeri Swanson and a Boy Scout removed buckthorn, an invasive plant, and requested to replace with other types of plantings, \$150 and was approved. Mike then discussed another residents concern over dogs barking, off leash and waste picked up.

Meeting adjourned at 9:00 p.m.

## Sylvan Lake Annual Meeting Brings together the Past and the Future

On Tuesday, September 22 the Sylvan Lake Improvement Association held its annual Board meeting. The meeting was held at the Countryside Fire Station located on Midlothian road. Residents filled the room to capacity.

Mike Trahan, President of the Board, began the meeting with a short slide show presentation capturing the various events held throughout the year and the many different types of wildlife found right here in Sylvan Lake.

Board members Mark Anderson and Kevin Adler were recognized for their time served on the Board. Mark is retiring after 10 years on the Board and Kevin after 6 years. Thank you to both. Dan Trahan's term was also up and has decided to continue his time on the Board.

Two new board members were elected to the Board, Deb Kvien (left) and Wendy Kjeldbjerg (right). Deb has been a resident of Sylvan Lake for 8 years and Wendy has been part of the community for a little over a year.



Dan Trahan reported that electricity has been run to the boat house at the beach and plans are to install lights internally and externally. Much work was performed at the sailboat pier by John Hynds and a new sailboat pier was approved for purchase.

Steve Magnusen reported on the status of the 319 grant applied for early this summer. The grant will provide for major projects around the lake that will address drainage and easement issues to create cleaner lake water. Steve worked quickly to submit a proposal for consideration and though we have not received final confirmation, Steve reported that a recommendation by the township was made to the IEPA for \$45,000. These funds would be in addition to what the Township contributes and the amount Sylvan Lake would contribute. A motion was made to allocate \$17,000 to the 319 project and was seconded and approved. Volunteer time will reduce the amount of actual cash outlay.



Kevin Adler reviewed the budget for 2010 and reported no change in dues and estimated a minor surplus for next year.

Christy Adler reported on the Garden Club activities for the year and announced new members and positions for 2010. The new Garden Club Board is President – Sandy Pakledinaz, Vice President – Kelly Dickinson, Treasurer – Nancy Love, and Secretary – Laurie MacKay.



# Environmental Efforts in 2009:

In late March a successful burn was completed in both Maple & Ravinia Parks by volunteers. As a result, many native wildflowers re-appeared in Ravinia.

On Clean-Up weekend, much Garlic Mustard was removed from Maple Park by residents Jon Kartman and Nancy Dove.

During June & July most of the Dame's Rocket (looks like Phlox) was removed.

In August an herbicide was done in Ravinia & Maple for Reed Canary Grass, it was only present in Ravinia, but due to run-off from Countryside Lake, it now appears in Maple Park. Another treatment will be done in the spring of 2010.

This summer, Sandy Pakledinaz did her yearly Eco-Watch of the stream in Maple and has good news to report this year: the numbers of tiny critters on the food chain is UP from years past. Her findings are documented in a lab and the numbers are encouraging. The more little critters we have, the healthier a body of water is. Sandy feels it is because of the stop in development and the run-off created by it. Jeri agrees and also feels the vegetation had a good winter and is much fuller in the stream bank corridor between the road and the bend of the creek, holding back more sediment.



Chris Hinrichsen and Jeri Swanson removed many bags of thistle and some buckthorn from Maple Park. A new invader, Black Locust is being watched closely, and removed. It travels via a strong root system and has large thorns on all branches, creates a huge canopy, blocking sunlight from the forest floor.

September is ragweed season, a lot has been removed, we ask that residents remove it from the curbs and their yards. It is horrible for allergy sufferers.

Fall is the best time to see buckthorn as it is the last to lose its leaves. Presently, Jeri has a scout completing a 30 hour service requirement who is removing buckthorn, Black Locust, and ragweed from Ravinia, Maple and the fenceline along North Sylvan. The buckthorn & Locust will be stacked along North Sylvan and then moved to the bonfire site for Oktoberfest. But don't let this stop YOU from removing invasives species on your properties.

Buckthorn has black seeds, smallish oval shaped leaves that have a jagged edge. Those seeds will fall and more buckthorn seedlings will appear next spring. We just do not have animal species that have a taste for buckthorn, hence it multiplies fast. Our squirrels and chipmunks prefer acorns.....

After the first snowfall, we hope that our non-evasive native seeds will be distributed to harden off, then melt into the landscape and hopefully germinate in the spring after a long winter's nap.

Chris Hinrichsen has agreed to volunteer and be trained to herbicide Reed Canary Grass. This will save Sylvan a lot of \$\$\$\$. Thank You Chris !

## Blahbity, blah, blah... **BUCKTHORN**

Fall is THE BEST TIME to spot buckthorn as it's almost the last shrub/tree to lose its leaves. The female plant has black berries that the birds love to eat and poop out in other locations. Those poops full of berries will sprout new buckthorn in other areas. Our quest to rid this area is a challenge, but YOU can help.

Look around for buckthorn...if you're not sure what it looks like, there are pictures on our website: [www.slia.net](http://www.slia.net).

### ***There still is a LOT of buckthorn on private properties.***

If you cut it before Oktoberfest, it can be burned in the big bonfire !! WHY ?? Because it can grow anywhere, sun, shade, wet or dry areas. We have a good handle on it now, but we have to keep up. The problem is that since it can survive anywhere, it creates a lower canopy in our wooded areas, preventing quality vegetation from surviving, which in turn helps create a lot of soil erosion. If sunlight can penetrate canopies, the native good ground covers can PREVENT soil erosion. Soil erosion causes silt to wash into the lake, making the lake murky, muddy and interfering with clarity. Clarity is needed for aquatic vegetation, which is needed for fish to breed and feed.

A scout is working presently on North Sylvan along the fenceline. Don't be alarmed at a few piles waiting there to be moved. When it's time to move them to the bonfire area, they will be moved.

Jeri Swanson  
Environmental





# Two Bee or Not Too Bee

It all started because Al Benedeck wanted some apples. The few old remaining apple trees from the Schwerman orchard behind the Benedeck's house had stopped producing because there were no more feral bees to pollinate the flower. So he read up about bees, obtained a few hives from some guy in the paper and joined the Lake County Bee Association.

He now has 11 hives but he teamed up with Uwe Moeller who has 12. Together they have 23 hives - a few in their yards and the rest around in local farms. Each hive will have 40,000 to 60,000 bees.



See [www.slja.net](http://www.slja.net) under 'This N' That' for the rest of the story!

*When the cell is filled with honey, the bees seal it with wax. That's Uwe on the left scraping the wax caps off the honeycomb.*



*Then Al puts the honeycomb in the extractor. It will hold 18 honeycombs at once*



# Beach Packed Away for Winter

Based on feedback we heard at the annual meeting and our general sense of style, we put our heads together this year and came up with a much better way to store the piers and rafts at the beach. We ask that if you have a boat that you'll be keeping at the beach over winter, store it as close as you can toward the shed. We'd like to keep the sail boat beach, boat ramp and majority of the beach clear of boats so we can enjoy the view and have clear access to the lake for winter activities. Thank you.



## Newsletter NEWS Needs Your Help

All are welcome to contribute information to the next issues of the *Sylvan Lake Shoreline*. Please email any information or pictures about the past happenings or upcoming events. I am sure that your information would be very interesting to our community!

**December 1st Issue News**  
is needed by:

***November 20th, 2009***

Pictures welcome!

Send to Donn Hamm at:

[dehamm@comcast.net](mailto:dehamm@comcast.net)

Please put Shoreline in the subject line.

*Shoreline* is a Newsletter for the Sylvan Lake Community, Sylvan Lake, Illinois

## Sylvan Lake Website

[www.slja.net](http://www.slja.net)

Sylvan Lake has a website that provides up-to-date information on events and activities around the lake. You can also download the latest Shoreline, participate on a message board, and learn about the lake's history. To access secure sections of the site, fill out the online form from the home page and the login information will be emailed to you.

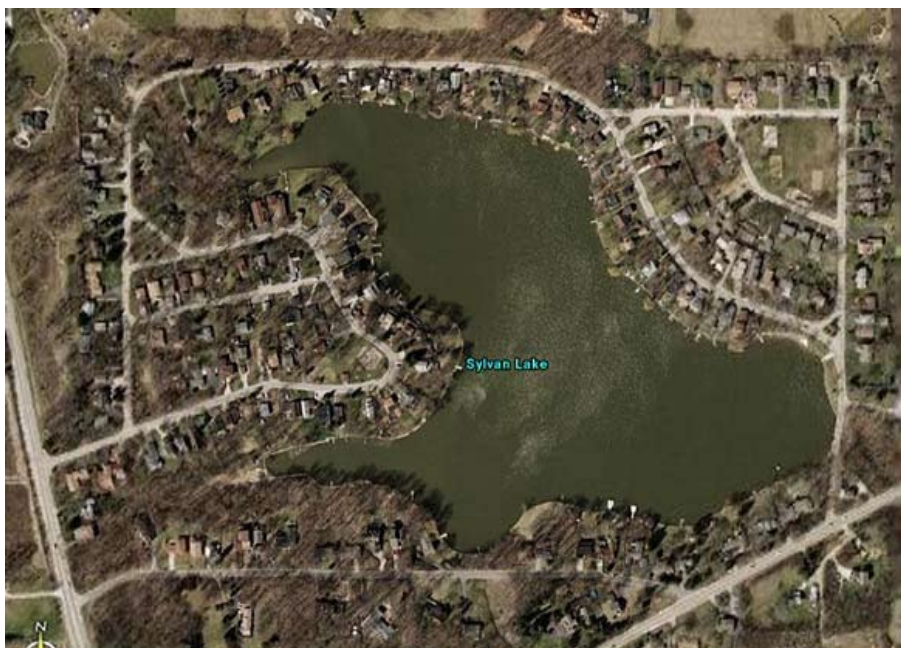
# And the Beat Goes On...

Historical Review from

10, 20, 30, 40, 50, and 60 years ago

*See more details and other historical information  
at [www.slia.net](http://www.slia.net)*

- 1949** - Motion made to rename Lindbergh to Schwerman Park. - Discussions regarding volunteer improvements included ball diamond and community house.
- 1959** - A general meeting resolution for township to take over road maintenance.
- 1969** - Sewers installed, and in the aftermath Sylvan Lake roads remained terrible for two years.  
- Garden Club started a clean-up day and purchased sand for the beach.
- 1979** - Committees set to pursue lake dredging.  
- First annual winter carnival.
- 1989** - Talk of incorporation with Gilmer begins.  
- A dinner cruise on Lake Geneva was enjoyed by about 40 residents.
- 1999** - Horseshoe League formed at Sylvan .  
- Environmental Committee formed by the Sylvan Lake Board to plan and execute improvements to our 2 major inlets, Ravinia Park and Maple Park.  
- Contract Bridge group is formed and has a great first year.  
- Garden Club plans Millennium Celebration dubbed "New Years Eve at Sylvan Lake." The progressive dinner with midnight champagne toast at the beach has been the work of many, with special efforts by Mary Harroun and Warren Young. The "midnight-at-the-beach" portion of the event was summarily dismissed after the first year. Brrrrrr.....



# Hot Projects October 2009

Sylvan Lake has many worthwhile projects on our 'to do' list.

This section will be devoted to highlighting just a few of the projects we'd like to work on in the coming year (the timing will vary).

We'll need a project leader for each and then willing helpers to work on completing the project. Please contact Wendy Kjeldbjerg (see info below) to express your interest to be a leader or a helper (or to volunteer your spouse or someone you know that would be just perfect for the project). We are also interested in recommendations of local businesses that would be able to help with our projects.

## HOT PROJECT LIST

- Repair or replace the baseball backstop fencing at Schwerman Park (the big park where the Oktoberfest is held).
- Replace two wood bridges in Maple Terrace over the stream bed where it empties into Maple Bay from Crescent and Shady Lane.
- Repair or replace the retaining bench wall at the beach (the top of it is a safety issue). Perhaps thick, treated wood on top or replace with segmented blocks. We need an assessment and then proposals for different stages of repair, all the way up to replacement.
- Sand down playground equipment (the wood is splintering) and look into replacing the bouncing ducks.

Please contact Wendy Kjeldbjerg at: [wkjel@comcast.net](mailto:wkjel@comcast.net) or 847-949-8042 (home #) to volunteer your time. If you are interested in seeing the entire list or suggesting other projects to improve our neighborhood please contact Wendy.



## Just Part of the Good Life In Sylvan Lake

Here's a picture that we just took today of our son David with a grasshopper that we found.

Thanks,  
Michael Tatevosian for Jill, David, Sophia, and Daniel



---

## Remember to Get Registered and Licensed!

Plan ahead for the next fishing and boating season by checking your boat registration and your fishing licenses for next year!

Information about boat registration stickers from the Illinois DNR can be found at:

<http://dnr.state.il.us/admin/boats.htm>

Please remember each boat needs a PFD (Personal Flotation Device – i.e. life preserver) for each person on the boat. Flotation seat cushions do not count as life preservers.

You don't have to be wearing the PFD, but they must be in the boat.

## Sylvan Lake Message Board

Found at [www.slja.net](http://www.slja.net)

Please add your suggestions, grumbles, lost kitties, found boats, garage sales, fascinating things spotted etc, etc, etc.... on the Sylvan Lake Message Board on our web site. - [www.slja.net](http://www.slja.net)

### *Here are some recent samples;*

If you are involved in a food drive and are not sure where to take the food, contact me. I go to pantries very often with deliveries from church. I would be glad to add yours to the mix. Call for a food pick-up 949-6617

*Tana Hamm*

Many have noticed, there is a big Willow tree that fell into the lake, behind 124 N. Sylvan. The tree is on Association property, and quotes have been received to remove it. There is no easy access, and the cheapest alternative is to wait until winter when removal over the ice can be done. So, that's what the Board decided. In the meantime, the fish might enjoy a new hangout.

*Steve Magnusen*

Thanks to the efforts of many, especially Sandy Washburn and her students, we only had -1- outbreak of Purple Loosestrife this year, growing out of the concrete at the dam. Pretty amazing. Thanks everyone for your help the past few years, it paid off. We also may have gotten a little help from the beetles (not the Beatles) that Volo Bog imported about 10 years ago to take care of a massive invasion of there of loosestrife. Jeri Swanson

*Jeri Swanson*

If anyone needs to use the beach and grill for a party, post a sign on the shed with the day and time that you're reserving it. This seemed to work well last year.

*Dan Trahan*

---

## Rain Gardens Keep the Lake Clean

Sylvan Lake is fed mainly by stormwater runoff. By creating a rain garden on your property, you can help improve the water quality in our lake. You can use rain the way nature intended, instead of throwing this resource away. A rain garden is a natural way for you to help solve our stormwater pollution problems, help recharge groundwater, and protect our water resources. In addition, rain gardens are attractive landscaping features. They use native species of plants that are adapted to our region, and they can be low maintenance while providing habitat for native wildlife and butterflies.

### **What they are & why they matter**

Rain gardens offer a low-cost method of improving water quality while preventing flooding and drainage problems. They make good use of rainwater runoff, native perennial flowers and grasses. They also create a habitat for wildlife such as birds and butterflies.

Holding back the runoff helps prevent rainwater from washing off your yard into storm sewers and retention ponds and eventually into nearby streams and lakes, carrying built-up chemicals and pollutants with it.

**For more information see [www.slja.net](http://www.slja.net), look under ENVIRONMENTAL, Rain Gardens.**

## Special Thanks ...

# Thank You Volunteers

At the annual meeting, we expressed Sylvan Lake's special thanks to these neighbors:

- Mark Anderson retiring after 10 years of service on the SLIA board and much hard work
- Kevin Adler retiring after 6 years of service on the SLIA board and also lots of hard work
- Nick Kirby for the Oktoberfest tent and his help for many years
- Jeri Swanson for leading Oktoberfest 2008 and Kevin Adler for handling the bar
- Lori and Joe Dupont for the Oktoberfest hayrides, also for many years
- Donn Hamm for the two new bulletin boards at S. Sylvan and Bjorkland Park
- Dan Kjeldbjerg for his tractor on Clean-Up Day moving sand
- Paul Stempian for the new bench he built
- Gary Love for his Carp-O-Rama trophies for many years
- John Hynds for fish, Carp-O-Rama prizes, signs, fish feeders and work on the lake
- Jim Bong for the electrical work at the beach and Bjorkland Park
- Dan Trahan for the past summer music fests at the beach
- Sandy Pakledinaz for environmental monitoring at Maple Park for many years
- Jeri Swanson for continuing to lead our environmental efforts after many years on the board, including three as president
- Mary Harroun for doing social events
- Gen Connor for doing our web site
- Donn Hamm for doing the *Shoreline*
- Joe Dupont for waterproofing the beach deck
- Chris Hinrichsen for his many volunteer projects and upcoming Reed Canary exterminations
- Jon Kartman for monitoring Maple Park's invasive species problem & removing them
- Jerry Kroll for monitoring Hiawatha Terrace and helping with repairs to the trail
- Sara & Bruce May for their lake monitoring for many years
- Stan & Rita Rak for 50 years of service in many ways
- Jon & Kathy Schwerman for taking care of Blue Heron Point.
- Donn & Tana Hamm for grooming the S. Sylvan entrance & also Ravinia Terrace
- Our board members, Christy Adler, Sam Ford, John Hynds, Doug MacKay, Steve Magnusen, Jeanne Peterson, Dan Trahan, and Mike Trahan
- AND to the many, many neighbors who have volunteered their time and help during the year. - *Many hands make light work!*

## Dogs

Dogs. We love them but sometimes they, or more correctly their owners, can be a problem for others.

We've had more than one instance around the lake of a dog not on a leash attacking other dogs or people. Sylvan Lake itself has no jurisdiction in these matters but Lake County does. If you see someone violating one of the following laws or regulations, please contact Lake County Animal Control at (847) 949-9925:

- **Dogs must be on a leash.**

The only exception is a dog on its owner's property and only while it remains on that property. Dogs running off their owner's property to attack other dogs or runners are a serious problem in our neighborhood. You must not let this happen if you own a dog. You should keep the dog on a leash. When dogs are loose, it is not only a concern for the people in the area, but a real risk to the dogs themselves. Our streets are dark. Midlothian and Gilmer are both dangerous roads for our 4-legged family members.

- **Owners must pick up their dog waste.**

We have placed pickup bags on posts around the neighborhood in case you have forgotten to take one with you on your dog walk.

- **Dogs left barking outside are a public nuisance.**

- **No dogs are allowed on the beach.**

Owners are subject to fines or more serious penalties from Lake County for violations.



# Garden Club Update

The Ladies of Sylvan Lake gathered for the Annual Garden Club Hors d'œuvre Party at the home of Laurie MacKay on Friday evening, September 18th. A beautiful fall night, coupled with good food, great conversation, and several new faces rounded out the evening.

After a brief overview of the Garden Club events this past year, all attendees previewed two designs that were generated for our Sylvan Lake spiritwear sales. Order forms will be coming soon so that deliveries can be made in time for the holidays! The business portion of our party ended with election of officers.

## *A very special thank you to the 2008-2009 Board members:*

Rachel Abel  
Christy Adler, *President*  
Kelly Dickinson, *Vice President*  
Kathy Ford  
Melissa Graham  
Nancy Love, *Treasurer*  
Laurie Mackay  
Sandy Pakledinaz, *Secretary*  
Mary Pohl  
Rita Rak

## **2009-2010 Executive Board:**

Sandy Pakledinaz, *President*  
Kelly Dickinson, *Vice President*  
Laurie MacKay, *Secretary*  
Nancy Love, *Treasurer*

It has been nothing but an honor to work with such a great group of women! They truly make amazing things happen for our community!

"Being good is commendable, but only when it is combined with doing good is it useful."

~Author Unknown

Thank you Garden Club for doing so much good in our neighborhood!

Signing off, Christy Adler, *Past President*



## Have You Said "Hello" to our New neighbors

We WELCOME our New Neighbors (and some returning) to Sylvan Lake.

Adam & Lisa Washburn  
117 N. Sylvan Drive

Karen Finerty  
81 N. Crescent Drive

Bill Dolbee & Sue Peecher  
21279 S. Sylvan Drive

Jennifer Cameron  
66 W. Crescent Drive  
847-949-7337

Dorothy Sloom  
194 Bittersweet  
847-566-7504

Joe Swinea  
192 Bittersweet Drive

---

## New arrivals

Michael & Jill Tatevosian  
A baby boy

David & Beth Kruse  
A baby boy

---

## Sadly Departed

A neighbor and friend, Ellyn Heider passed away suddenly on September 4<sup>th</sup>. Ellyn was born at Sylvan Lake and lived here her entire 55 years. She will be missed.